

GDC rabbit pAb

Catalog No :	YT7288
Reactivity :	Human;Mouse;Rat
Applications :	WB
Target :	GDC
Gene Name :	SLC25A16 GDA
Protein Name :	GDC
Human Gene Id :	8034
Human Swiss Prot No :	P16260
Mouse Gene Id :	73132
Mouse Swiss Prot No :	Q8C0K5
Rat Swiss Prot No :	P16261
Immunogen :	Synthesized peptide derived from human GDC AA range: 241-291
Specificity :	This antibody detects endogenous levels of GDC at Human/Mouse/Rat
Formulation :	Liquid in PBS containing 50% glycerol, 0.5% BSA and 0.02% sodium azide.
Source :	Polyclonal, Rabbit,IgG
Dilution :	WB 1[?]500-2000
Purification :	The antibody was affinity-purified from rabbit antiserum by affinity-chromatography using epitope-specific immunogen.
Concentration :	1 mg/ml

Storage Stability : -15°C to -25°C/1 year(Do not lower than -25°C)

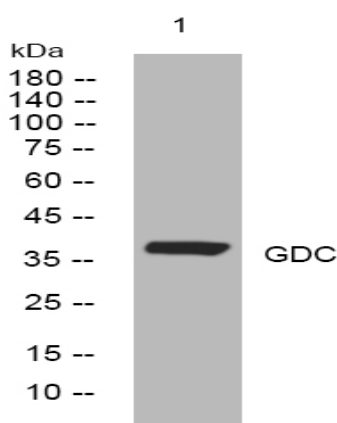
Molecularweight : 37kD

Background : This gene encodes a protein that contains three tandemly repeated mitochondrial carrier protein domains. The encoded protein is localized in the inner membrane and facilitates the rapid transport and exchange of molecules between the cytosol and the mitochondrial matrix space. This gene has a possible role in Graves' disease. [provided by RefSeq, Jul 2008],

Function : disease:Possible role in Graves disease. This protein is recognized by IgG from patients with active Graves disease.,function:Required for the accumulation of coenzyme A in the mitochondrial matrix.,similarity:Belongs to the mitochondrial carrier family.,similarity:Contains 3 Solcar repeats.,

Subcellular Location : Mitochondrion inner membrane ; Multi-pass membrane protein .

Products Images



Western blot analysis of lysates from MDA-MB cells, primary antibody was diluted at 1:1000, 4°over night