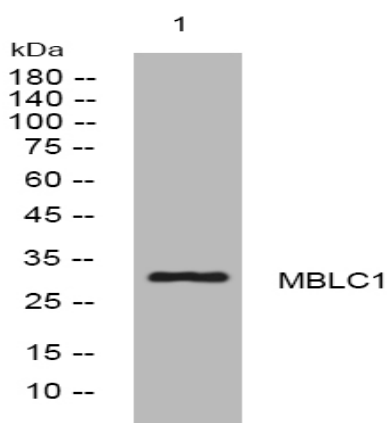


MBLC1 rabbit pAb

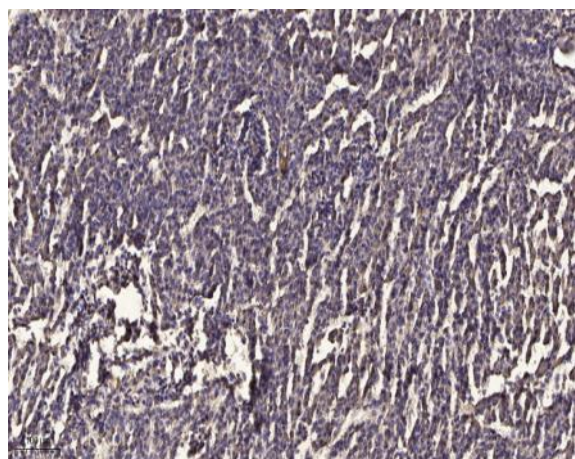
Catalog No :	YT7286
Reactivity :	Human;Mouse;Rat
Applications :	WB;IHC
Target :	MBLC1
Gene Name :	MBLAC1
Protein Name :	MBLC1
Human Gene Id :	255374
Human Swiss Prot No :	A4D2B0
Mouse Gene Id :	330216
Mouse Swiss Prot No :	Q8BWY4
Rat Gene Id :	304346
Rat Swiss Prot No :	Q6AYD1
Immunogen :	Synthesized peptide derived from human MBLC1 AA range: 1-51
Specificity :	This antibody detects endogenous levels of MBLC1 at Human/Mouse/Rat
Formulation :	Liquid in PBS containing 50% glycerol, 0.5% BSA and 0.02% sodium azide.
Source :	Polyclonal, Rabbit,IgG
Dilution :	WB 1:500-2000;IHC 1:50-300
Purification :	The antibody was affinity-purified from rabbit antiserum by affinity-chromatography using epitope-specific immunogen.

Concentration :	1 mg/ml
Storage Stability :	-15°C to -25°C/1 year(Do not lower than -25°C)
Molecularweight :	29kD
Function :	cofactor: Binds 2 zinc ions per subunit., similarity: Belongs to the metallo-beta-lactamase superfamily. Glyoxalase II family.,
Subcellular Location :	Cytoplasm, cytosol . Nucleus . Localizes in the nucleus during early S-phase of the cell cycle. .

Products Images



Western blot analysis of lysates from MCF-7 cells, primary antibody was diluted at 1:1000, 4° over night



Immunohistochemical analysis of paraffin-embedded human meningioma. 1, Antibody was diluted at 1:200(4° overnight). 2, Tris-EDTA, pH9.0 was used for antigen retrieval. 3, Secondary antibody was diluted at 1:200(room temperature, 45min).