

HDBP1 rabbit pAb

Catalog No :	YT7282
Reactivity :	Human;Mouse
Applications :	WB
Target :	HDBP1
Gene Name :	GPIHBP1 HBP1
Protein Name :	HDBP1
Human Gene Id :	338328
Human Swiss Prot No :	Q8IV16
Mouse Gene Id :	68453
Mouse Swiss Prot No :	Q9D1N2
Immunogen :	Synthesized peptide derived from human HDBP1 AA range: 1-51
Specificity :	This antibody detects endogenous levels of HDBP1 at Human/Mouse
Formulation :	Liquid in PBS containing 50% glycerol, 0.5% BSA and 0.02% sodium azide.
Source :	Polyclonal, Rabbit,IgG
Dilution :	WB 1:500-2000
Purification :	The antibody was affinity-purified from rabbit antiserum by affinity-chromatography using epitope-specific immunogen.
Concentration :	1 mg/ml
Storage Stability :	-15°C to -25°C/1 year(Do not lower than -25°C)

Molecularweight : 20kD

Background :

This gene encodes a capillary endothelial cell protein that facilitates the lipolytic processing of triglyceride-rich lipoproteins. The encoded protein is a glycosylphosphatidylinositol-anchored protein that is a member of the lymphocyte antigen 6 (Ly6) family. This protein plays a major role in transporting lipoprotein lipase (LPL) from the subendothelial spaces to the capillary lumen. Mutations in this gene are the cause of hyperlipoproteinemia, type 1D. Alternate splicing results in multiple transcript variants. [provided by RefSeq, Sep 2014],

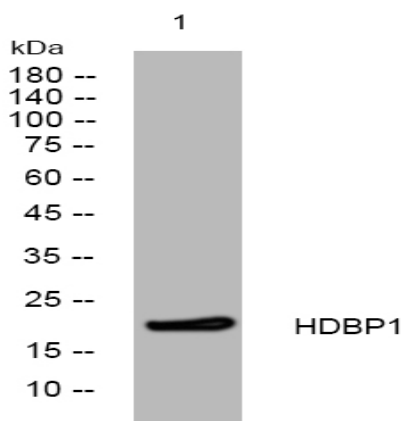
Function :

caution:The mouse ortholog has been suggested to be a GPI-anchored protein, but no GPI-anchor is detected by prediction methods.,function:Plays a key role in the lipolytic processing of chylomicrons.,polymorphism:The missense variant Arg-56 may be associated with severe hypertriglyceridemia and chylomicronemia.,similarity:Contains 1 UPAR/Ly6 domain.,subcellular location:Localized at the cell surface.,subunit:Binds with high affinity to high-density lipoprotein (HDL) (By similarity). Binds to lipoprotein lipase (LPL), chylomicrons and APOA5.,

Subcellular Location :

Apical cell membrane ; Lipid-anchor, GPI-anchor . Basolateral cell membrane ; Lipid-anchor, GPI-anchor . Cell membrane ; Lipid-anchor, GPI-anchor .

Products Images



Western blot analysis of lysates from DU145 cells, primary antibody was diluted at 1:1000, 4° over night