

## LCMT2 rabbit pAb

<b>Catalog No :</b>	YT7278
<b>Reactivity :</b>	Human;Mouse;Rat
<b>Applications :</b>	WB;ELISA;IHC
<b>Target :</b>	LCMT2
<b>Gene Name :</b>	LCMT2 KIAA0547 TYW4
<b>Protein Name :</b>	LCMT2
<b>Human Gene Id :</b>	9836
<b>Human Swiss Prot No :</b>	O60294
<b>Mouse Gene Id :</b>	329504
<b>Mouse Swiss Prot No :</b>	Q8BYR1
<b>Rat Gene Id :</b>	296098
<b>Rat Swiss Prot No :</b>	Q5XIA3
<b>Immunogen :</b>	Synthesized peptide derived from human LCMT2 AA range: 298-348
<b>Specificity :</b>	This antibody detects endogenous levels of LCMT2 at Human/Mouse/Rat
<b>Formulation :</b>	Liquid in PBS containing 50% glycerol, 0.5% BSA and 0.02% sodium azide.
<b>Source :</b>	Polyclonal, Rabbit,IgG
<b>Dilution :</b>	WB 1:500-2000;IHC 1:50-300; ELISA 2000-20000
<b>Purification :</b>	The antibody was affinity-purified from rabbit antiserum by affinity-chromatography using epitope-specific immunogen.

**Concentration :** 1 mg/ml

**Storage Stability :** -15°C to -25°C/1 year(Do not lower than -25°C)

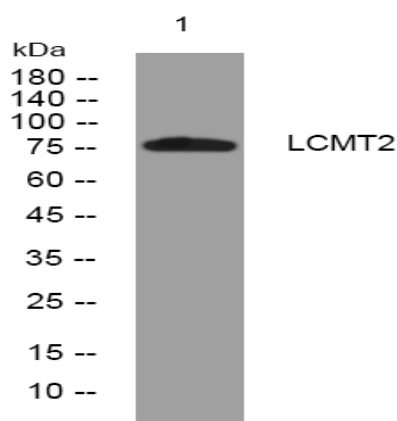
**Molecularweight :** 75kD

**Background :** The protein encoded by this intronless gene belongs to the highly variable methyltransferase superfamily. This gene is the inferred homolog of the *Saccharomyces cerevisiae* carboxymethyltransferase gene PPM2 that is essential for the synthesis of the hypermodified guanosine Wybutosine (yW). [provided by RefSeq, Jul 2008],

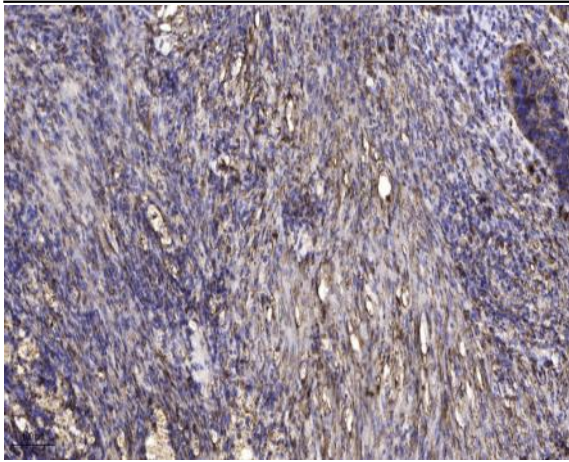
**Function :** function:Probable S-adenosyl-L-methionine-dependent methyltransferase that acts as a component of the wybutosine biosynthesis pathway. Wybutosine is a hyper modified guanosine with a tricyclic base found at the 3'-position adjacent to the anticodon of eukaryotic phenylalanine tRNA (By similarity). May methylate the carboxyl group of leucine residues to form alpha-leucine ester residues.,pathway:tRNA modification; wybutosine-tRNA(Phe) biosynthesis.,similarity:Belongs to the methyltransferase superfamily. LCMT family.,subunit:Interacts with RNF144B/IBRDC2.,

**Subcellular Location :** cytoplasm,cytosol,

## Products Images



Western blot analysis of lysates from PC-12 cells, primary antibody was diluted at 1:1000, 4° over night



Immunohistochemical analysis of paraffin-embedded human Squamous cell carcinoma of lung. 1, Antibody was diluted at 1:200(4° overnight). 2, Tris-EDTA,pH9.0 was used for antigen retrieval. 3,Secondary antibody was diluted at 1:200(room temperature, 45min).