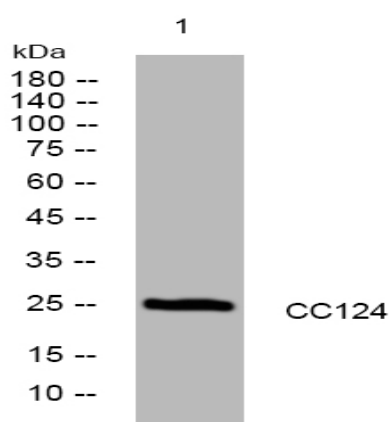


## CC124 rabbit pAb

<b>Catalog No :</b>	YT7273
<b>Reactivity :</b>	Human;Mouse
<b>Applications :</b>	WB
<b>Target :</b>	CC124
<b>Gene Name :</b>	CCDC124
<b>Protein Name :</b>	CC124
<b>Human Gene Id :</b>	115098
<b>Human Swiss Prot No :</b>	Q96CT7
<b>Mouse Gene Id :</b>	234388
<b>Mouse Swiss Prot No :</b>	Q9D8X2
<b>Immunogen :</b>	Synthesized peptide derived from human CC124 AA range: 56-106
<b>Specificity :</b>	This antibody detects endogenous levels of CC124 at Human/Mouse
<b>Formulation :</b>	Liquid in PBS containing 50% glycerol, 0.5% BSA and 0.02% sodium azide.
<b>Source :</b>	Polyclonal, Rabbit,IgG
<b>Dilution :</b>	WB 1:500-2000
<b>Purification :</b>	The antibody was affinity-purified from rabbit antiserum by affinity-chromatography using epitope-specific immunogen.
<b>Concentration :</b>	1 mg/ml
<b>Storage Stability :</b>	-15°C to -25°C/1 year(Do not lower than -25°C)

**Molecularweight :** 25kD**Function :** similarity:Belongs to the CCDC124 family.,**Subcellular Location :** Cytoplasm, cytoskeleton, microtubule organizing center, centrosome . Midbody . Colocalizes with gamma-tubulin at interphase, prophase, metaphase, and anaphase. Relocates from centrosome to midbody at telophase.**Expression :** Ubiquitously expressed.

## Products Images



Western blot analysis of lysates from A431 cells, primary antibody was diluted at 1:1000, 4° over night