

TULP3 rabbit pAb

Catalog No :	YT7270
Reactivity :	Human;Mouse
Applications :	WB
Target :	TULP3
Gene Name :	TULP3 TUBL3
Protein Name :	TULP3
Human Gene Id :	7289
Human Swiss Prot No :	O75386
Mouse Gene Id :	22158
Mouse Swiss Prot No :	O88413
Immunogen :	Synthesized peptide derived from human TULP3 AA range: 257-307
Specificity :	This antibody detects endogenous levels of TULP3 at Human/Mouse
Formulation :	Liquid in PBS containing 50% glycerol, 0.5% BSA and 0.02% sodium azide.
Source :	Polyclonal, Rabbit,IgG
Dilution :	WB 1:500-2000
Purification :	The antibody was affinity-purified from rabbit antiserum by affinity-chromatography using epitope-specific immunogen.
Concentration :	1 mg/ml
Storage Stability :	-15°C to -25°C/1 year(Do not lower than -25°C)

Molecularweight : 49kD**Background :**

This gene encodes a member of the tubby gene family of bipartite transcription factors. Members of this family have been identified in plants, vertebrates, and invertebrates, and they share a conserved N-terminal transcription activation region and a conserved C-terminal DNA and phosphatidylinositol-phosphate binding region. The encoded protein binds to phosphoinositides in the plasma membrane via its C-terminal region and probably functions as a membrane-bound transcription regulator that translocates to the nucleus in response to phosphoinositide hydrolysis, for instance, induced by G-protein-coupled-receptor signaling. It plays an important role in neuronal development and function. Two transcript variants encoding distinct isoforms have been identified for this gene. [provided by RefSeq, May 2009],

Function :

similarity:Belongs to the TUB family.,tissue specificity:Expressed at high levels in testis, ovaries, thyroid, and spinal chord.,

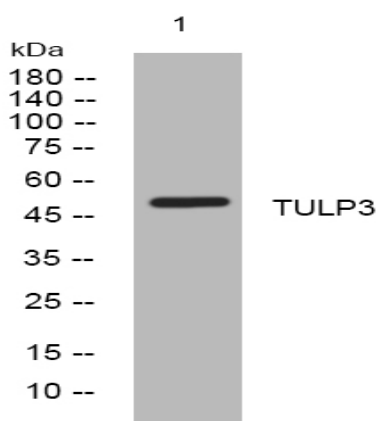
Subcellular Location :

Nucleus. Cell membrane. Cell projection, cilium . Cytoplasm . Secreted . Does not have a cleavable signal peptide and is secreted by a non-conventional pathway (By similarity). Translocates from the plasma membrane to the nucleus upon activation of guanine nucleotide-binding protein G(q) subunit alpha. .

Expression :

Expressed at high levels in testis, ovaries, thyroid, and spinal chord.

Products Images



Western blot analysis of lysates from HeLa cells, primary antibody was diluted at 1:1000, 4° over night