

PRS54 rabbit pAb

Catalog No :	YT7267
Reactivity :	Human;Mouse;Rat
Applications :	WB;IHC
Target :	PRS54
Gene Name :	PRSS54 KLKBL4
Protein Name :	PRS54
Human Gene Id :	221191
Human Swiss Prot No :	Q6PEW0
Mouse Gene Id :	70993
Mouse Swiss Prot No :	Q7M756
Rat Gene Id :	291846
Rat Swiss Prot No :	Q6AY28
Immunogen :	Synthesized peptide derived from human PRS54 AA range: 211-261
Specificity :	This antibody detects endogenous levels of PRS54 at Human/Mouse/Rat
Formulation :	Liquid in PBS containing 50% glycerol, 0.5% BSA and 0.02% sodium azide.
Source :	Polyclonal, Rabbit,IgG
Dilution :	WB 1:500-2000;IHC 1:50-300
Purification :	The antibody was affinity-purified from rabbit antiserum by affinity-chromatography using epitope-specific immunogen.

Concentration : 1 mg/ml

Storage Stability : -15°C to -25°C/1 year(Do not lower than -25°C)

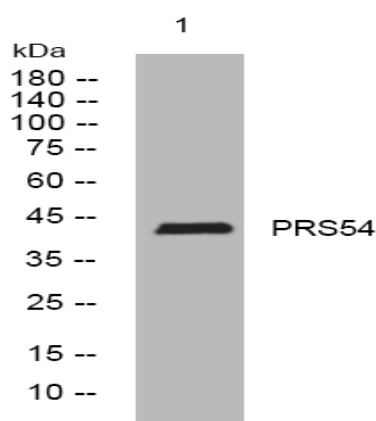
Molecularweight : 43kD

Background : This gene encodes a putative serine-type endopeptidase containing the peptidase S1 domain. Alternative splicing of this gene results in multiple transcript variants. [provided by RefSeq, Feb 2015],

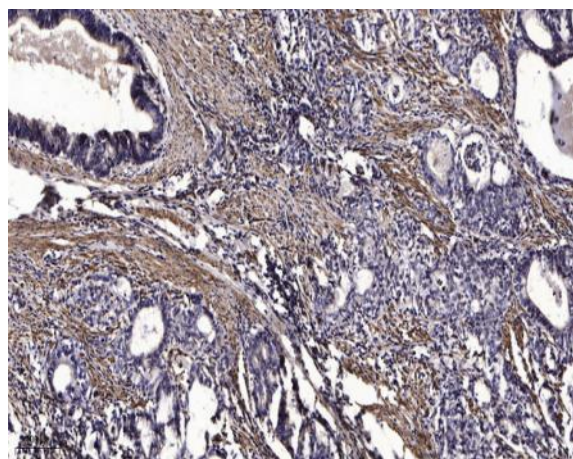
Function : domain:The serine protease domain lacks the essential His, Asp, and Ser residues of the catalytic triad at positions 83, 129 and 221 and is predicted to be inactive.,similarity:Belongs to the peptidase S1 family. Plasma kallikrein subfamily.,similarity:Contains 1 peptidase S1 domain.,

Subcellular Location : Secreted .

Products Images



Western blot analysis of lysates from HpeG2 cells, primary antibody was diluted at 1:1000, 4° over night



Immunohistochemical analysis of paraffin-embedded human Gastric adenocarcinoma. 1, Antibody was diluted at 1:200(4° overnight). 2, Tris-EDTA,pH9.0 was used for antigen retrieval. 3,Secondary antibody was diluted at 1:200(room temperature, 45min).