

## SDK1 rabbit pAb

<b>Catalog No :</b>	YT7261
<b>Reactivity :</b>	Human;Mouse
<b>Applications :</b>	WB;IHC
<b>Target :</b>	SDK1
<b>Gene Name :</b>	SDK1
<b>Protein Name :</b>	SDK1
<b>Human Gene Id :</b>	221935
<b>Human Swiss Prot No :</b>	Q7Z5N4
<b>Mouse Gene Id :</b>	330222
<b>Mouse Swiss Prot No :</b>	Q3UH53
<b>Immunogen :</b>	Synthesized peptide derived from human SDK1 AA range: 962-1012
<b>Specificity :</b>	This antibody detects endogenous levels of SDK1 at Human/Mouse
<b>Formulation :</b>	Liquid in PBS containing 50% glycerol, 0.5% BSA and 0.02% sodium azide.
<b>Source :</b>	Polyclonal, Rabbit,IgG
<b>Dilution :</b>	WB 1:500-2000;IHC 1:50-300
<b>Purification :</b>	The antibody was affinity-purified from rabbit antiserum by affinity-chromatography using epitope-specific immunogen.
<b>Concentration :</b>	1 mg/ml
<b>Storage Stability :</b>	-15°C to -25°C/1 year(Do not lower than -25°C)

**Molecularweight :** 243kD

**Background :**

The protein encoded by this gene is a member of the immunoglobulin superfamily. The protein contains six immunoglobulin-like domains and thirteen fibronectin type III domains. Fibronectin type III domains are present in both extracellular and intracellular proteins and tandem repeats are known to contain binding sites for DNA, heparin and the cell surface. Alternative splicing results in multiple transcript variants. [provided by RefSeq, Jul 2016],

**Function :**

function:Cell adhesion protein that guides axonal terminals to specific synapses in developing neurons. Dysregulation of this protein may play an important role in podocyte dysfunction in HIV-associated nephropathy.,similarity:Contains 13 fibronectin type-III domains.,similarity:Contains 6 Ig-like C2-type (immunoglobulin-like) domains.,tissue specificity:Up-regulated in glomeruli in HIV-associated nephropathy. In diseased glomeruli, significantly overexpressed and the expression is no longer restricted to mesangial cells but includes podocytes and parietal epithelial cells.,

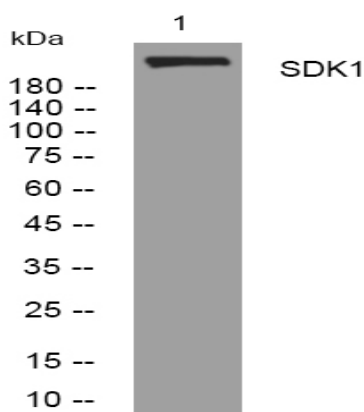
**Subcellular Location :**

Cell membrane ; Single-pass type I membrane protein . Cell junction, synapse .

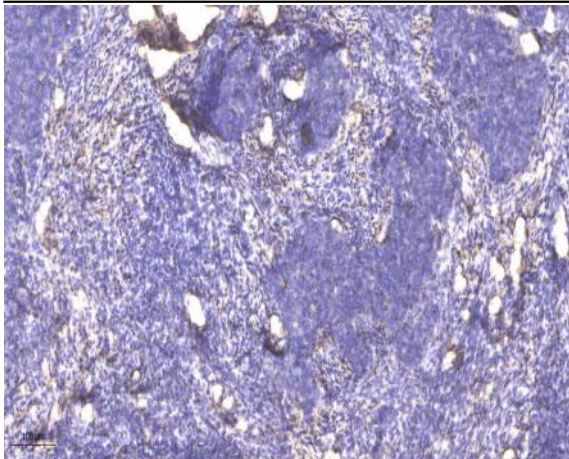
**Expression :**

Up-regulated in glomeruli in HIV-associated nephropathy. In diseased glomeruli, significantly overexpressed and the expression is no longer restricted to mesangial cells but includes podocytes and parietal epithelial cells (PubMed:15213259).

## Products Images



Western blot analysis of lysates from SW480 cells, primary antibody was diluted at 1:1000, 4° over night



Immunohistochemical analysis of paraffin-embedded human cervical carcinoma. 1, Antibody was diluted at 1:200(4° overnight). 2, Tris-EDTA,pH9.0 was used for antigen retrieval. 3,Secondary antibody was diluted at 1:200(room temperature, 45min).