

WDR85 rabbit pAb

Catalog No :	YT7260
Reactivity :	Human;Mouse
Applications :	WB
Target :	WDR85
Gene Name :	WDR85 C9orf112
Protein Name :	WDR85
Human Gene Id :	92715
Human Swiss Prot No :	Q9BTV6
Mouse Gene Id :	67228
Mouse Swiss Prot No :	Q9CYU6
Immunogen :	Synthesized peptide derived from human WDR85 AA range: 205-255
Specificity :	This antibody detects endogenous levels of WDR85 at Human/Mouse
Formulation :	Liquid in PBS containing 50% glycerol, 0.5% BSA and 0.02% sodium azide.
Source :	Polyclonal, Rabbit,IgG
Dilution :	WB 1:500-2000
Purification :	The antibody was affinity-purified from rabbit antiserum by affinity-chromatography using epitope-specific immunogen.
Concentration :	1 mg/ml
Storage Stability :	-15°C to -25°C/1 year(Do not lower than -25°C)

Molecularweight : 50kD

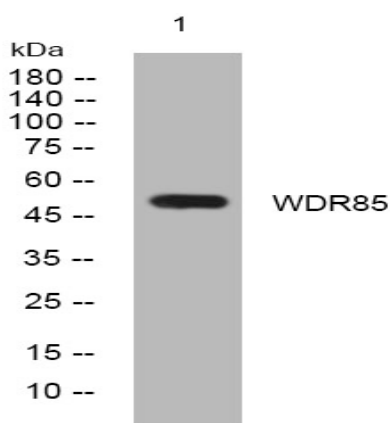
Background :

Diphthamide is a post-translationally modified histidine residue present in elongation factor 2, and is the target of diphtheria toxin. This gene encodes a protein that contains a WD-40 domain, and is thought to be involved in diphthamide biosynthesis. A similar protein in yeast functions as a methyltransferase, converting methylated diphthine to diphthine, which can then undergo amidation to produce diphthamide. [provided by RefSeq, Oct 2016],

Function :

similarity:Contains 3 WD repeats.,

Products Images



Western blot analysis of lysates from K562 cells, primary antibody was diluted at 1:1000, 4° over night