

## DBC1 rabbit pAb

<b>Catalog No :</b>	YT7255
<b>Reactivity :</b>	Human;Mouse;Rat
<b>Applications :</b>	WB
<b>Target :</b>	DBC1
<b>Gene Name :</b>	DBC1 DBCCR1 FAM5A IB3089A
<b>Protein Name :</b>	DBC1
<b>Human Gene Id :</b>	1620
<b>Human Swiss Prot No :</b>	O60477
<b>Mouse Gene Id :</b>	56710
<b>Mouse Swiss Prot No :</b>	Q920P3
<b>Rat Gene Id :</b>	140610
<b>Rat Swiss Prot No :</b>	Q925T8
<b>Immunogen :</b>	Synthesized peptide derived from human DBC1 AA range: 100-150
<b>Specificity :</b>	This antibody detects endogenous levels of DBC1 at Human/Mouse/Rat
<b>Formulation :</b>	Liquid in PBS containing 50% glycerol, 0.5% BSA and 0.02% sodium azide.
<b>Source :</b>	Polyclonal, Rabbit,IgG
<b>Dilution :</b>	WB 1:500-2000
<b>Purification :</b>	The antibody was affinity-purified from rabbit antiserum by affinity-chromatography using epitope-specific immunogen.

**Concentration :** 1 mg/ml

**Storage Stability :** -15°C to -25°C/1 year(Do not lower than -25°C)

**Molecularweight :** 84kD

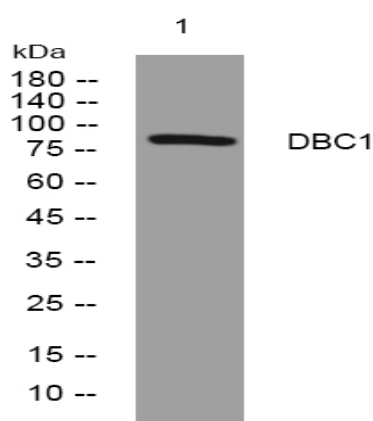
**Background :** This gene is located within a chromosomal region that shows loss of heterozygosity in some bladder cancers. It contains a 5' CpG island that may be a frequent target of hypermethylation, and it may undergo hypermethylation-based silencing in some bladder cancers. [provided by RefSeq, Jul 2008],

**Function :** function:Inhibits cell proliferation by negative regulation of the G1/S transition. Mediates cell death which is not of the classical apoptotic type and regulates expression of components of the plasminogen pathway.,miscellaneous:DBC1 is silenced by methylation in 50% of bladder cancer cell lines.,similarity:Belongs to the FAM5 family.,similarity:Contains 1 MACPF domain.,tissue specificity:Highly expressed in brain. Weakly expressed in heart, lung, skeletal muscle, kidney, thymus, prostate, testis and small intestine.,

**Subcellular Location :** Cytoplasm .

**Expression :** Highly expressed in brain. Weakly expressed in heart, lung, skeletal muscle, kidney, thymus, prostate, testis and small intestine.

## Products Images



Western blot analysis of lysates from KB cells, primary antibody was diluted at 1:1000, 4° over night