

## WDR52 rabbit pAb

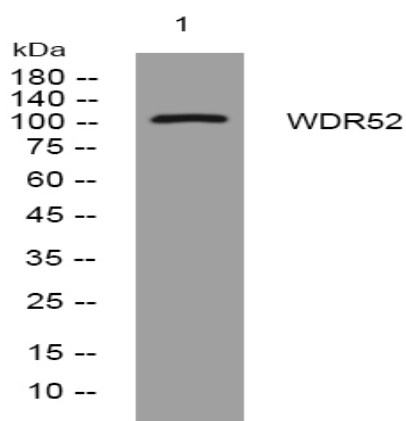
<b>Catalog No :</b>	YT7249
<b>Reactivity :</b>	Human;Mouse
<b>Applications :</b>	WB
<b>Target :</b>	WDR52
<b>Gene Name :</b>	WDR52
<b>Protein Name :</b>	WDR52
<b>Human Gene Id :</b>	55779
<b>Human Swiss Prot No :</b>	Q96MT7
<b>Immunogen :</b>	Synthesized peptide derived from human WDR52 AA range: 492-542
<b>Specificity :</b>	This antibody detects endogenous levels of WDR52 at Human
<b>Formulation :</b>	Liquid in PBS containing 50% glycerol, 0.5% BSA and 0.02% sodium azide.
<b>Source :</b>	Polyclonal, Rabbit,IgG
<b>Dilution :</b>	WB 1:500-2000
<b>Purification :</b>	The antibody was affinity-purified from rabbit antiserum by affinity-chromatography using epitope-specific immunogen.
<b>Concentration :</b>	1 mg/ml
<b>Storage Stability :</b>	-15°C to -25°C/1 year(Do not lower than -25°C)
<b>Molecularweight :</b>	108kD
<b>Function :</b>	similarity:Contains 9 WD repeats.,

---

<b>Subcellular Location :</b>	<u>Cell projection, cilium, flagellum . Cytoplasm, cytoskeleton, flagellum axoneme .</u>
<b>Expression :</b>	<u>Testis-specific.</u>

---

## Products Images



Western blot analysis of lysates from Hela cells, primary antibody was diluted at 1:1000, 4 ° over night