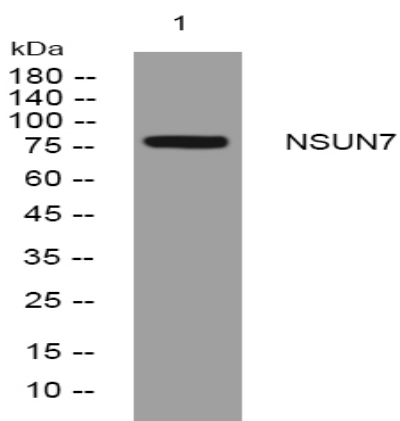


NSUN7 rabbit pAb

| | |
|------------------------------|---|
| Catalog No : | YT7247 |
| Reactivity : | Human;Mouse |
| Applications : | WB |
| Target : | NSUN7 |
| Gene Name : | NSUN7 |
| Protein Name : | NSUN7 |
| Human Swiss Prot No : | Q8NE18 |
| Mouse Gene Id : | 70918 |
| Mouse Swiss Prot No : | Q14AW5 |
| Immunogen : | Synthesized peptide derived from human NSUN7 AA range: 139-189 |
| Specificity : | This antibody detects endogenous levels of NSUN7 at Human/Mouse |
| Formulation : | Liquid in PBS containing 50% glycerol, 0.5% BSA and 0.02% sodium azide. |
| Source : | Polyclonal, Rabbit,IgG |
| Dilution : | WB 1[?]500-2000 |
| Purification : | The antibody was affinity-purified from rabbit antiserum by affinity-chromatography using epitope-specific immunogen. |
| Concentration : | 1 mg/ml |
| Storage Stability : | -15°C to -25°C/1 year(Do not lower than -25°C) |
| Molecularweight : | 79kD |

Function :

function:May have S-adenosyl-L-methionine-dependent methyl-transferase activity .,similarity:Belongs to the methyltransferase superfamily. RsmB/NOP family.,

Products Images

Western blot analysis of lysates from MDA-MB cells, primary antibody was diluted at 1:1000, 4° over night