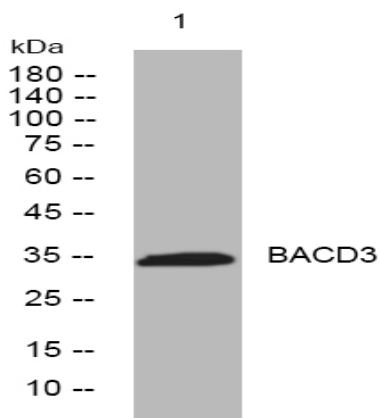


BACD3 rabbit pAb

Catalog No :	YT7244
Reactivity :	Human;Mouse;Rat
Applications :	WB
Target :	BACD3
Gene Name :	KCTD10 ULR061 MSTP028
Protein Name :	BACD3
Human Gene Id :	83892
Human Swiss Prot No :	Q9H3F6
Mouse Gene Id :	330171
Mouse Swiss Prot No :	Q922M3
Rat Gene Id :	494521
Rat Swiss Prot No :	Q7TPL3
Immunogen :	Synthesized peptide derived from human BACD3 AA range: 67-117
Specificity :	This antibody detects endogenous levels of BACD3 at Human/Mouse/Rat
Formulation :	Liquid in PBS containing 50% glycerol, 0.5% BSA and 0.02% sodium azide.
Source :	Polyclonal, Rabbit,IgG
Dilution :	WB 1:500-2000
Purification :	The antibody was affinity-purified from rabbit antiserum by affinity-chromatography using epitope-specific immunogen.

Concentration :	1 mg/ml
Storage Stability :	-15°C to -25°C/1 year(Do not lower than -25°C)
Molecularweight :	34kD
Background :	The protein encoded by this gene binds proliferating cell nuclear antigen (PCNA) and may be involved in DNA synthesis and cell proliferation. In addition, the encoded protein may be a tumor suppressor. Several protein-coding and non-protein coding transcript variants have been found for this gene. [provided by RefSeq, Dec 2015],
Function :	similarity:Belongs to the KCTD10/KCTD13/TNFAIP1 family.,similarity:Contains 1 BTB (POZ) domain.,subunit:Interacts with PCNA and DNA polymerase delta subunit 2/POLD2.,
Subcellular Location :	Nucleus .

Products Images



Western blot analysis of lysates from MCF-7 cells, primary antibody was diluted at 1:1000, 4° over night