

## VGLL1 rabbit pAb

<b>Catalog No :</b>	YT7242
<b>Reactivity :</b>	Human;Mouse
<b>Applications :</b>	WB
<b>Target :</b>	VGLL1
<b>Gene Name :</b>	VGLL1 TDU
<b>Protein Name :</b>	VGLL1
<b>Human Gene Id :</b>	51442
<b>Human Swiss Prot No :</b>	Q99990
<b>Mouse Gene Id :</b>	170828
<b>Mouse Swiss Prot No :</b>	Q99NC0
<b>Immunogen :</b>	Synthesized peptide derived from human VGLL1 AA range: 84-134
<b>Specificity :</b>	This antibody detects endogenous levels of VGLL1 at Human/Mouse
<b>Formulation :</b>	Liquid in PBS containing 50% glycerol, 0.5% BSA and 0.02% sodium azide.
<b>Source :</b>	Polyclonal, Rabbit,IgG
<b>Dilution :</b>	WB 1:500-2000
<b>Purification :</b>	The antibody was affinity-purified from rabbit antiserum by affinity-chromatography using epitope-specific immunogen.
<b>Concentration :</b>	1 mg/ml
<b>Storage Stability :</b>	-15°C to -25°C/1 year(Do not lower than -25°C)

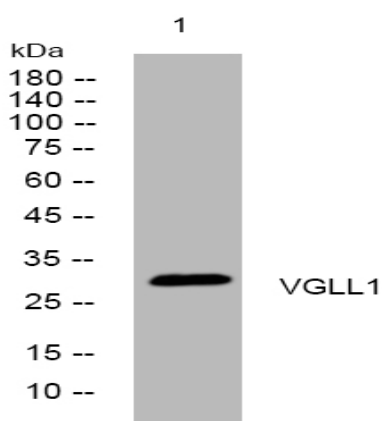
**Molecularweight :** 28kD

**Background :** The protein encoded by this gene binds proteins of the TEA domain family of transcription factors (TEFs) through the Vg (vestigial) homology region found in its N-terminus. It may thus function as a specific coactivator for the mammalian TEFs. [provided by RefSeq, Sep 2009],

**Function :** function:May act as a specific coactivator for the mammalian TEFs.,similarity:Belongs to the vestigial family.,subunit:Interacts with TEFs.,

**Subcellular Location :** Nucleus.

## Products Images



Western blot analysis of lysates from HeLa cells, primary antibody was diluted at 1:1000, 4° over night