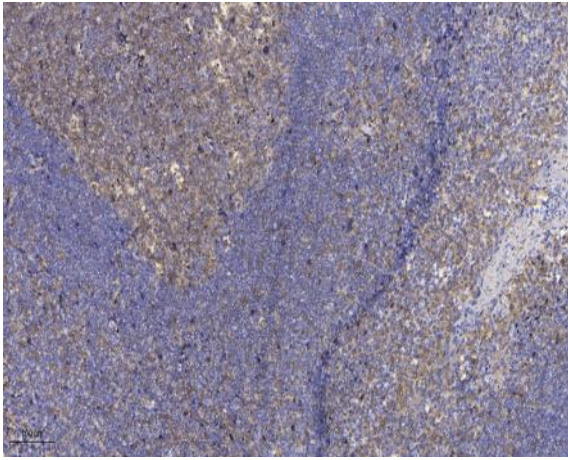


CU082 rabbit pAb

Catalog No :	YT7236
Reactivity :	Human
Applications :	IHC;IF
Target :	CU082
Gene Name :	LINC00310 C21orf82 NCRNA00310
Protein Name :	CU082
Human Swiss Prot No :	P59036
Immunogen :	Synthesized peptide derived from human CU082 AA range: 12-62
Specificity :	This antibody detects endogenous levels of CU082 at Human
Formulation :	Liquid in PBS containing 50% glycerol, 0.5% BSA and 0.02% sodium azide.
Source :	Polyclonal, Rabbit,IgG
Dilution :	IHC 1:50-200. IF 1:50-200
Purification :	The antibody was affinity-purified from rabbit antiserum by affinity-chromatography using epitope-specific immunogen.
Concentration :	1 mg/ml
Storage Stability :	-15°C to -25°C/1 year(Do not lower than -25°C)
Molecularweight :	7kD
Function :	tissue specificity:Widely expressed; not found in breast.,
Expression :	Widely expressed; not found in breast.

Products Images



Immunohistochemical analysis of paraffin-embedded human tonsil. 1, Antibody was diluted at 1:200(4° overnight). 2, Tris-EDTA,pH9.0 was used for antigen retrieval. 3,Secondary antibody was diluted at 1:200(room temperature, 30min).