

CTGE9 rabbit pAb

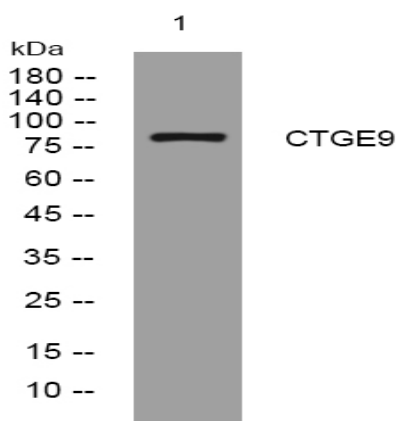
Catalog No :	YT7229
Reactivity :	Human
Applications :	WB
Target :	CTGE9
Gene Name :	CTAGE9
Protein Name :	CTGE9
Human Gene Id :	643854
Human Swiss Prot No :	A4FU28
Immunogen :	Synthesized peptide derived from human CTGE9 AA range: 294-344
Specificity :	This antibody detects endogenous levels of CTGE9 at Human
Formulation :	Liquid in PBS containing 50% glycerol, 0.5% BSA and 0.02% sodium azide.
Source :	Polyclonal, Rabbit,IgG
Dilution :	WB 1:500-2000
Purification :	The antibody was affinity-purified from rabbit antiserum by affinity-chromatography using epitope-specific immunogen.
Concentration :	1 mg/ml
Storage Stability :	-15°C to -25°C/1 year(Do not lower than -25°C)
Molecularweight :	85kD
Function :	disease:Autoantigen found several cancer types, including benign meningioma and cutaneous T-cell lymphoma (CTCL). Isoform 5A and isoform 5B are recognized by patients' sera with tumor specimen of various

origins.,disease:Tumor-associated antigen found in several cutaneous T-cell lymphoma (CTCL). Also found in colorectal and breast carcinomas, head and neck squamous cell carcinomas and melanoma.,function:Tumor-associated antigen.,sequence caution:Translation N-terminally extended.,similarity:Belongs to the cTAGE family.,tissue specificity:At the protein level, isoform 5A is expressed only in testis. Other isoforms are expressed in several other normal tissues, including brain, muscle and cranial skin. Isoform 5A (at the protein level) and isoform 5B are expressed in cutaneous T-cell lymphoma (CTCL) cell lines, colorectal carcinomas, breast carcinomas and melanoma. Isoform 5B, but not isoform 5A, is expressed in melanoma cell lines.

Subcellular Location :

Membrane ; Single-pass membrane protein .

Products Images



Western blot analysis of lysates from SH-SY5Y cells, primary antibody was diluted at 1:1000, 4° over night