

HIPL1 rabbit pAb

Catalog No :	YT7227
Reactivity :	Human;Mouse
Applications :	WB
Target :	HIPL1
Gene Name :	HHIPL1 HHIP2 KIAA1822 UNQ9245/PRO34761
Protein Name :	HIPL1
Human Gene Id :	84439
Human Swiss Prot No :	Q96JK4
Mouse Gene Id :	214305
Mouse Swiss Prot No :	Q14DK5
Immunogen :	Synthesized peptide derived from human HIPL1 AA range: 730-780
Specificity :	This antibody detects endogenous levels of HIPL1 at Human/Mouse
Formulation :	Liquid in PBS containing 50% glycerol, 0.5% BSA and 0.02% sodium azide.
Source :	Polyclonal, Rabbit,IgG
Dilution :	WB 1:500-2000
Purification :	The antibody was affinity-purified from rabbit antiserum by affinity-chromatography using epitope-specific immunogen.
Concentration :	1 mg/ml
Storage Stability :	-15°C to -25°C/1 year(Do not lower than -25°C)

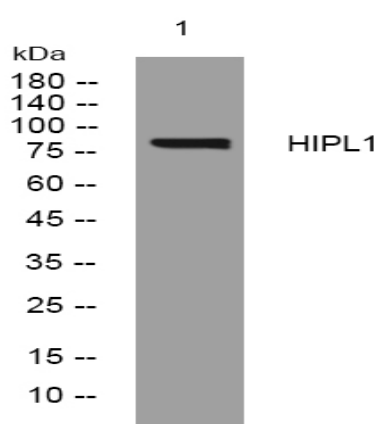
Molecularweight : 86kD

Background : This gene encodes a protein that belongs to the glucose/sorbosone dehydrogenase family. The encoded protein also contains a domain that binds folate and reduced folic acid derivatives. [provided by RefSeq, Jul 2016],

Function : similarity:Belongs to the HHIP family.,similarity:Contains 1 SRCR domain.,

Subcellular Location : Secreted .

Products Images



Western blot analysis of lysates from MCF-7 cells, primary antibody was diluted at 1:1000, 4° over night