

LRRC2 rabbit pAb

| | |
|------------------------------|---|
| Catalog No : | YT7226 |
| Reactivity : | Human;Mouse |
| Applications : | WB |
| Target : | LRRC2 |
| Gene Name : | LRRC2 |
| Protein Name : | LRRC2 |
| Human Gene Id : | 79442 |
| Human Swiss Prot No : | Q9BYS8 |
| Mouse Gene Id : | 74249 |
| Mouse Swiss Prot No : | Q8VDB8 |
| Immunogen : | Synthesized peptide derived from human LRRC2 AA range: 130-180 |
| Specificity : | This antibody detects endogenous levels of LRRC2 at Human/Mouse |
| Formulation : | Liquid in PBS containing 50% glycerol, 0.5% BSA and 0.02% sodium azide. |
| Source : | Polyclonal, Rabbit,IgG |
| Dilution : | WB 1:500-2000 |
| Purification : | The antibody was affinity-purified from rabbit antiserum by affinity-chromatography using epitope-specific immunogen. |
| Concentration : | 1 mg/ml |
| Storage Stability : | -15°C to -25°C/1 year(Do not lower than -25°C) |

Molecularweight : 41kD

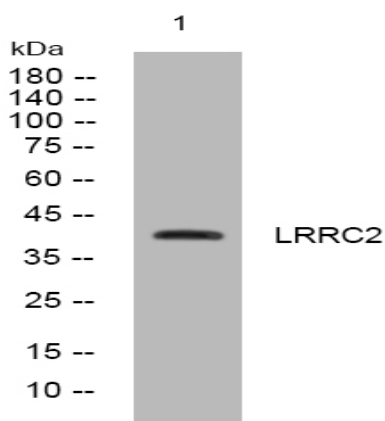
Background :

This gene encodes a member of the leucine-rich repeat-containing family of proteins, which function in diverse biological pathways. This family member may possibly be a nuclear protein. Similarity to the RAS suppressor protein, as well as expression down-regulation observed in tumor cells, suggests that it may function as a tumor suppressor. The gene is located in the chromosome 3 common eliminated region 1 (C3CER1), a 1.4 Mb region that is commonly deleted in diverse tumors. A related pseudogene has been identified on chromosome 2. [provided by RefSeq, Sep 2011],

Function :

similarity:Contains 9 LRR (leucine-rich) repeats.,

Products Images



Western blot analysis of lysates from AD293 cells, primary antibody was diluted at 1:1000, 4° over night