

EP3A rabbit pAb

Catalog No :	YT7223
Reactivity :	Human
Applications :	WB
Target :	EP3A
Gene Name :	EDDM3A FAM12A HE3A
Protein Name :	EP3A
Human Gene Id :	10876
Human Swiss Prot No :	Q14507
Immunogen :	Synthesized peptide derived from human EP3A AA range: 1-51
Specificity :	This antibody detects endogenous levels of EP3A at Human
Formulation :	Liquid in PBS containing 50% glycerol, 0.5% BSA and 0.02% sodium azide.
Source :	Polyclonal, Rabbit,IgG
Dilution :	WB 1:500-2000
Purification :	The antibody was affinity-purified from rabbit antiserum by affinity-chromatography using epitope-specific immunogen.
Concentration :	1 mg/ml
Storage Stability :	-15°C to -25°C/1 year(Do not lower than -25°C)
Molecularweight :	16kD
Background :	Testicular sperm are morphologically differentiated but are not progressively motile nor able to fertilize an egg. Post-testicular maturation requires exposure of spermatozoa to the microenvironment of the epididymal lumen. Spermatozoa

undergo extensive changes in the epididymis, including enzymatic modifications, loss of pre-existing components and addition of new glycoproteins from epididymal secretions. These modifying proteins and enzymes are synthesized by epithelial cells lining the epididymal duct and secreted apically into the lumen, where they come into contact with, and may be absorbed onto, the sperm membranes. The proteins encoded by the genes in this cluster are synthesized and secreted by epididymal epithelial cells. [provided by RefSeq, Jul 2008],

Function :

function:Possible function in sperm maturation.,tissue specificity:Epididymis, with predominant expression in the corpus region. Moderately expressed in the vas deferens; only low levels are detectable in the caput and cauda regions.,

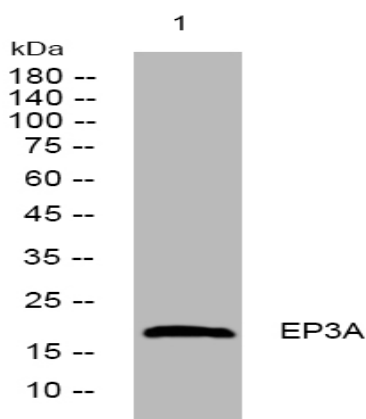
Subcellular Location :

Secreted .

Expression :

Epididymis, with predominant expression in the corpus region. Moderately expressed in the vas deferens; only low levels are detectable in the caput and cauda regions.

Products Images



Western blot analysis of lysates from Jurkat cells, primary antibody was diluted at 1:1000, 4° over night