

K1C28 rabbit pAb

Catalog No :	YT7221
Reactivity :	Human;Mouse
Applications :	WB;IHC
Target :	K1C28
Fields :	>>Estrogen signaling pathway;>>Staphylococcus aureus infection
Gene Name :	KRT28 KRT25D
Protein Name :	K1C28
Human Gene Id :	162605
Human Swiss Prot No :	Q7Z3Y7
Mouse Gene Id :	70843
Mouse Swiss Prot No :	A6BLY7
Immunogen :	Synthesized peptide derived from human K1C28 AA range: 324-374
Specificity :	This antibody detects endogenous levels of K1C28 at Human/Mouse
Formulation :	Liquid in PBS containing 50% glycerol, 0.5% BSA and 0.02% sodium azide.
Source :	Polyclonal, Rabbit,IgG
Dilution :	WB 1:500-2000;IHC 1:50-300
Purification :	The antibody was affinity-purified from rabbit antiserum by affinity-chromatography using epitope-specific immunogen.
Concentration :	1 mg/ml

Storage Stability : -15°C to -25°C/1 year(Do not lower than -25°C)

Molecularweight : 51kD

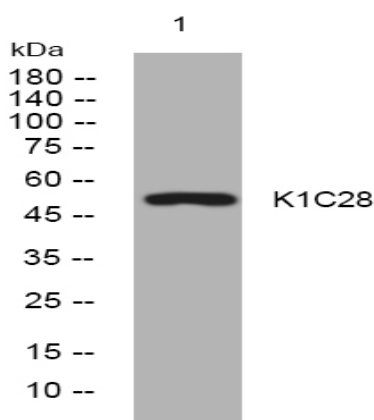
Background : This gene encodes a member of the type I (acidic) keratin family, which belongs to the superfamily of intermediate filament (IF) proteins. Keratins are heteropolymeric structural proteins which form the intermediate filament. These filaments, along with actin microfilaments and microtubules, compose the cytoskeleton of epithelial cells. The type I keratin genes are clustered in a region of chromosome 17q12-q21. [provided by RefSeq, Jul 2009],

Function : function:Essential for the proper assembly of types I and II keratin protein complexes and the formation of keratin intermediate filaments in the inner root sheath (irs).,miscellaneous:There are two types of cytoskeletal and microfibrillar keratin: I (acidic; 40-55 kDa) and II (neutral to basic; 56-70 kDa).,similarity:Belongs to the intermediate filament family.,subunit:Heterotetramer of two type I and two type II keratins.,tissue specificity:Strongly expressed in skin and scalp, and weak expression observed in thymus. In the hair follicle, expressed in Henle layer, Huxley layer and in the irs cuticle. Expression extends from the bulb region up to the point of differentiation into the three layers. Also present in the medulla of beard hair (at protein level).,

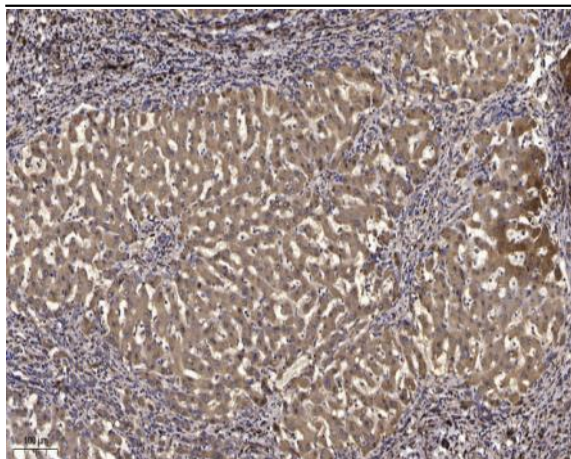
Subcellular Location : Cytoplasm .

Expression : Strongly expressed in skin and scalp, and weak expression observed in thymus. In the hair follicle, expressed in Henle layer, Huxley layer and in the irs cuticle. Expression extends from the bulb region up to the point of differentiation into the three layers. Also present in the medulla of beard hair (at protein level).

Products Images



Western blot analysis of lysates from HeLa cells, primary antibody was diluted at 1:1000, 4° over night



Immunohistochemical analysis of paraffin-embedded human liver cancer. 1, Antibody was diluted at 1:200(4° overnight). 2, Tris-EDTA,pH9.0 was used for antigen retrieval. 3,Secondary antibody was diluted at 1:200(room temperature, 45min).