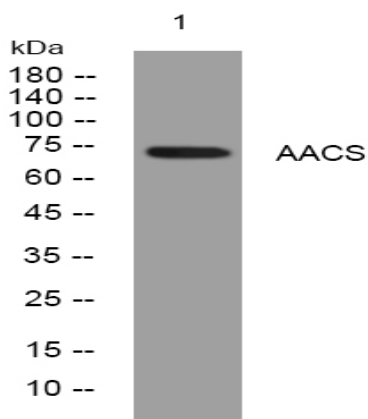


AACS rabbit pAb

Catalog No :	YT7216
Reactivity :	Human;Mouse;Rat
Applications :	WB
Target :	AACS
Fields :	>>Valine, leucine and isoleucine degradation;>>Butanoate metabolism;>>Metabolic pathways
Gene Name :	AACS ACSF1
Protein Name :	AACS
Human Gene Id :	65985
Human Swiss Prot No :	Q86V21
Mouse Gene Id :	78894
Mouse Swiss Prot No :	Q9D2R0
Rat Gene Id :	65984
Rat Swiss Prot No :	Q9JMI1
Immunogen :	Synthesized peptide derived from human AACS AA range: 193-243
Specificity :	This antibody detects endogenous levels of AACS at Human/Mouse/Rat
Formulation :	Liquid in PBS containing 50% glycerol, 0.5% BSA and 0.02% sodium azide.
Source :	Polyclonal, Rabbit,IgG
Dilution :	WB 1:500-2000

Purification :	The antibody was affinity-purified from rabbit antiserum by affinity-chromatography using epitope-specific immunogen.
Concentration :	1 mg/ml
Storage Stability :	-15°C to -25°C/1 year(Do not lower than -25°C)
Molecularweight :	74kD
Function :	catalytic activity:ATP + acetoacetate + CoA = AMP + diphosphate + acetoacetyl-CoA.,function:Activates acetoacetate to acetoacetyl-CoA. May be involved in utilizing ketone body for the fatty acid-synthesis during adipose tissue development.,similarity:Belongs to the ATP-dependent AMP-binding enzyme family.,tissue specificity:Highly expressed in kidney, heart and brain, but low in liver.,
Subcellular Location :	Cytoplasm, cytosol .
Expression :	Highly expressed in kidney, heart and brain, but low in liver.

Products Images



Western blot analysis of lysates from HpeG2 cells, primary antibody was diluted at 1:1000, 4° over night