

**S22AA rabbit pAb**

|                              |   |
|------------------------------|---|
| <b>Catalog No :</b>          | YT7214  |
| <b>Reactivity :</b>          | Human   |
| <b>Applications :</b>        | WB  |
| <b>Target :</b>              | S22AA   |
| <b>Gene Name :</b>           | SLC22A10 OAT5   |
| <b>Protein Name :</b>        | S22AA   |
| <b>Human Gene Id :</b>       | 387775  |
| <b>Human Swiss Prot No :</b> | Q63ZE4  |
| <b>Immunogen :</b>           | Synthesized peptide derived from human S22AA AA range: 154-204  |
| <b>Specificity :</b>         | This antibody detects endogenous levels of S22AA at Human   |
| <b>Formulation :</b>         | Liquid in PBS containing 50% glycerol, 0.5% BSA and 0.02% sodium azide.   |
| <b>Source :</b>              | Polyclonal, Rabbit,IgG  |
| <b>Dilution :</b>            | WB 1:500-2000   |
| <b>Purification :</b>        | The antibody was affinity-purified from rabbit antiserum by affinity-chromatography using epitope-specific immunogen.   |
| <b>Concentration :</b>       | 1 mg/ml   |
| <b>Storage Stability :</b>   | -15 °C to -25 °C/1 year(Do not lower than -25 °C)   |
| <b>Molecularweight :</b>     | 60kD  |
| <b>Function :</b>            | similarity:Belongs to the major facilitator superfamily. Organic cation transporter family.,tissue specificity:Detected in fetal and adult liver, and in adult kidney., |

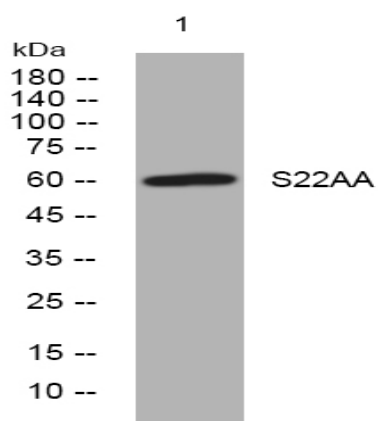
**Subcellular Location :**

Membrane ; Multi-pass membrane protein .

**Expression :**

Detected in fetal and adult liver, and in adult kidney.

## Products Images



Western blot analysis of lysates from PC-12 cells, primary antibody was diluted at 1:1000, 4° over night