

## TM192 rabbit pAb

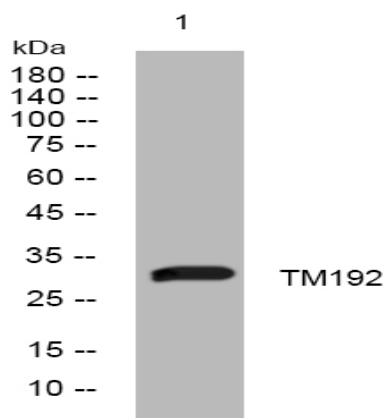
<b>Catalog No :</b>	YT7209
<b>Reactivity :</b>	Human;Mouse;Rat
<b>Applications :</b>	WB;IHC
<b>Target :</b>	TM192
<b>Gene Name :</b>	TMEM192
<b>Protein Name :</b>	TM192
<b>Human Gene Id :</b>	201931
<b>Human Swiss Prot No :</b>	Q8IY95
<b>Mouse Gene Id :</b>	73067
<b>Mouse Swiss Prot No :</b>	Q9CXT7
<b>Rat Gene Id :</b>	361137
<b>Rat Swiss Prot No :</b>	Q5U1Y0
<b>Immunogen :</b>	Synthesized peptide derived from human TM192 AA range: 27-77
<b>Specificity :</b>	This antibody detects endogenous levels of TM192 at Human/Mouse/Rat
<b>Formulation :</b>	Liquid in PBS containing 50% glycerol, 0.5% BSA and 0.02% sodium azide.
<b>Source :</b>	Polyclonal, Rabbit,IgG
<b>Dilution :</b>	WB 1:500-2000;IHC 1:50-300
<b>Purification :</b>	The antibody was affinity-purified from rabbit antiserum by affinity-chromatography using epitope-specific immunogen.

---

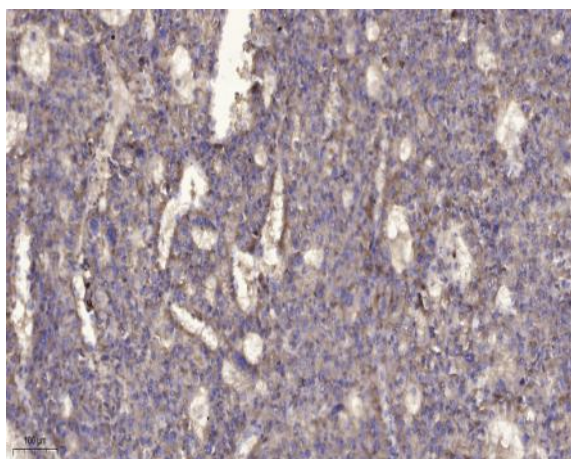
<b>Concentration :</b>	<u>1 mg/ml</u>
<b>Storage Stability :</b>	<u>-15°C to -25°C/1 year(Do not lower than -25°C)</u>
<b>Molecularweight :</b>	<u>30kD</u>
<b>Function :</b>	<u>PTM:Phosphorylated upon DNA damage, probably by ATM or ATR.,similarity:Belongs to the TMEM192 family.,</u>
<b>Subcellular Location :</b>	<u>Lysosome membrane ; Multi-pass membrane protein . Late endosome .</u>
<b>Expression :</b>	<u>Strongly expressed in kidney, liver, lung and pancreas.</u>

---

## Products Images



Western blot analysis of lysates from MCF-7 cells, primary antibody was diluted at 1:1000, 4° over night



Immunohistochemical analysis of paraffin-embedded human liver cancer. 1, Antibody was diluted at 1:200(4° overnight). 2, Tris-EDTA,pH9.0 was used for antigen retrieval. 3,Secondary antibody was diluted at 1:200(room temperature, 45min).