

ZN606 rabbit pAb

| | |
|------------------------------|---|
| Catalog No : | YT7206 |
| Reactivity : | Human |
| Applications : | WB |
| Target : | ZN606 |
| Fields : | >>Herpes simplex virus 1 infection |
| Gene Name : | ZNF606 KIAA1852 ZNF328 |
| Protein Name : | ZN606 |
| Human Gene Id : | 80095 |
| Human Swiss Prot No : | Q8WXB4 |
| Immunogen : | Synthesized peptide derived from human ZN606 AA range: 557-607 |
| Specificity : | This antibody detects endogenous levels of ZN606 at Human |
| Formulation : | Liquid in PBS containing 50% glycerol, 0.5% BSA and 0.02% sodium azide. |
| Source : | Polyclonal, Rabbit,IgG |
| Dilution : | WB 1[?]500-2000 |
| Purification : | The antibody was affinity-purified from rabbit antiserum by affinity-chromatography using epitope-specific immunogen. |
| Concentration : | 1 mg/ml |
| Storage Stability : | -15°C to -25°C/1 year(Do not lower than -25°C) |
| Molecularweight : | 87kD |

Function :

function:May be involved in transcriptional regulation.,similarity:Belongs to the krueppel C2H2-type zinc-finger protein family.,similarity:Contains 1 KRAB domain.,similarity:Contains 16 C2H2-type zinc fingers.,tissue specificity:Expressed in brain.,

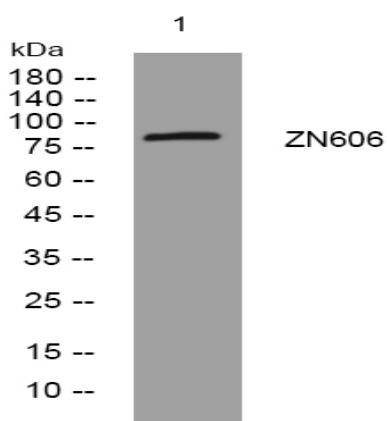
Subcellular Location :

Nucleus .

Expression :

Widely expressed in adult and fetal tissues.

Products Images



Western blot analysis of lysates from KB cells, primary antibody was diluted at 1:1000, 4° over night