

## GNT2A rabbit pAb

<b>Catalog No :</b>	YT7199
<b>Reactivity :</b>	Human;Mouse
<b>Applications :</b>	WB
<b>Target :</b>	GNT2A
<b>Fields :</b>	>>Glycosphingolipid biosynthesis - lacto and neolacto series;>>Metabolic pathways
<b>Gene Name :</b>	GCNT2 GCNT5 II NACGT1
<b>Protein Name :</b>	GNT2A
<b>Human Gene Id :</b>	2651
<b>Human Swiss Prot No :</b>	Q8N0V5
<b>Immunogen :</b>	Synthesized peptide derived from human GNT2A AA range: 191-241
<b>Specificity :</b>	This antibody detects endogenous levels of GNT2A at Human
<b>Formulation :</b>	Liquid in PBS containing 50% glycerol, 0.5% BSA and 0.02% sodium azide.
<b>Source :</b>	Polyclonal, Rabbit,IgG
<b>Dilution :</b>	WB 1[?]500-2000
<b>Purification :</b>	The antibody was affinity-purified from rabbit antiserum by affinity-chromatography using epitope-specific immunogen.
<b>Concentration :</b>	1 mg/ml
<b>Storage Stability :</b>	-15°C to -25°C/1 year(Do not lower than -25°C)
<b>Molecularweight :</b>	44kD

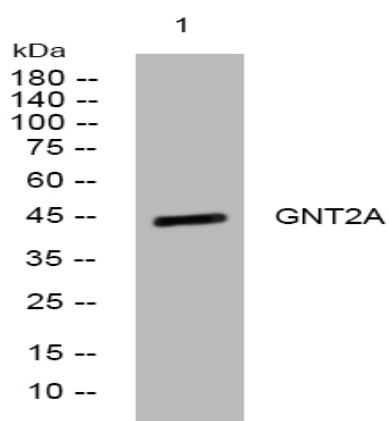
**Subcellular Location :**

Golgi apparatus membrane ; Single-pass type II membrane protein .

**Expression :**

[Isoform B]: Expressed in lens epithelium cells. ; [Isoform C]: Expressed in reticulocytes.

## Products Images



Western blot analysis of lysates from HeLa cells, primary antibody was diluted at 1:1000, 4° over night