

## CEL3B rabbit pAb

<b>Catalog No :</b>	YT7198
<b>Reactivity :</b>	Human;Mouse
<b>Applications :</b>	WB
<b>Target :</b>	CEL3B
<b>Fields :</b>	>>Pancreatic secretion;>>Protein digestion and absorption
<b>Gene Name :</b>	CELA3B ELA3B
<b>Protein Name :</b>	CEL3B
<b>Human Gene Id :</b>	23436
<b>Human Swiss Prot No :</b>	P08861
<b>Mouse Gene Id :</b>	67868
<b>Mouse Swiss Prot No :</b>	Q9CQ52
<b>Immunogen :</b>	Synthesized peptide derived from human CEL3B AA range: 206-256
<b>Specificity :</b>	This antibody detects endogenous levels of CEL3B at Human/Mouse
<b>Formulation :</b>	Liquid in PBS containing 50% glycerol, 0.5% BSA and 0.02% sodium azide.
<b>Source :</b>	Polyclonal, Rabbit,IgG
<b>Dilution :</b>	WB 1[?]500-2000
<b>Purification :</b>	The antibody was affinity-purified from rabbit antiserum by affinity-chromatography using epitope-specific immunogen.
<b>Concentration :</b>	1 mg/ml

**Storage Stability :** -15°C to -25°C/1 year(Do not lower than -25°C)

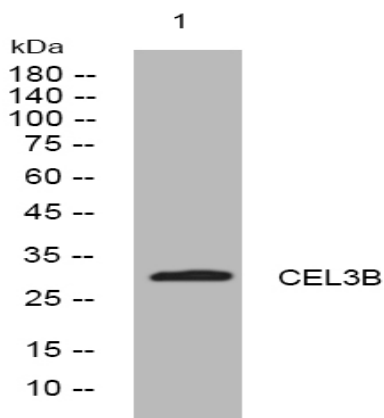
**Molecularweight :** 30kD

**Background :** Elastases form a subfamily of serine proteases that hydrolyze many proteins in addition to elastin. Humans have six elastase genes which encode the structurally similar proteins elastase 1, 2, 2A, 2B, 3A, and 3B. Unlike other elastases, elastase 3B has little elastolytic activity. Like most of the human elastases, elastase 3B is secreted from the pancreas as a zymogen and, like other serine proteases such as trypsin, chymotrypsin and kallikrein, it has a digestive function in the intestine. Elastase 3B preferentially cleaves proteins after alanine residues. Elastase 3B may also function in the intestinal transport and metabolism of cholesterol. Both elastase 3A and elastase 3B have been referred to as protease E and as elastase 1, and excretion of this protein in fecal material is frequently used as a measure of pancreatic function in clinical assays. [provided by RefSeq, May 2009],

**Subcellular Location :** extracellular space,

**Expression :** Pancreas. Not detectable in keratinocytes.

## Products Images



Western blot analysis of lysates from SH-SY5Y cells, primary antibody was diluted at 1:1000, 4° over night