

**SRS12 rabbit pAb**

|                              |   |
|------------------------------|---|
| <b>Catalog No :</b>          | YT7192  |
| <b>Reactivity :</b>          | Human;Mouse   |
| <b>Applications :</b>        | WB  |
| <b>Target :</b>              | SRS12   |
| <b>Gene Name :</b>           | SRSF12 SFRS13B SFRS19 SRRP35  |
| <b>Protein Name :</b>        | SRS12   |
| <b>Human Gene Id :</b>       | 135295  |
| <b>Human Swiss Prot No :</b> | Q8WXF0  |
| <b>Mouse Gene Id :</b>       | 272009  |
| <b>Mouse Swiss Prot No :</b> | Q8C8K3  |
| <b>Immunogen :</b>           | Synthesized peptide derived from human SRS12 AA range: 105-155  |
| <b>Specificity :</b>         | This antibody detects endogenous levels of SRS12 at Human/Mouse   |
| <b>Formulation :</b>         | Liquid in PBS containing 50% glycerol, 0.5% BSA and 0.02% sodium azide.   |
| <b>Source :</b>              | Polyclonal, Rabbit,IgG  |
| <b>Dilution :</b>            | WB 1:500-2000   |
| <b>Purification :</b>        | The antibody was affinity-purified from rabbit antiserum by affinity-chromatography using epitope-specific immunogen. |
| <b>Concentration :</b>       | 1 mg/ml   |
| <b>Storage Stability :</b>   | -15°C to -25°C/1 year(Do not lower than -25°C)  |

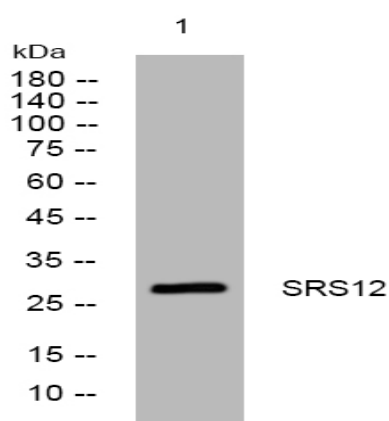
**Molecularweight :** 29kD

**Function :** function:Splicing factor that seems to antagonize SR proteins in pre-mRNA splicing regulation.,similarity:Belongs to the splicing factor SR family.,similarity:Contains 1 RRM (RNA recognition motif) domain.,tissue specificity:Expressed in testis.,

**Subcellular Location :** Nucleus .

**Expression :** Expressed in testis.

## Products Images



Western blot analysis of lysates from A431 cells, primary antibody was diluted at 1:1000, 4° over night