

PSA7L rabbit pAb

Catalog No :	YT7187
Reactivity :	Human;Mouse
Applications :	WB;IHC
Target :	PSA7L
Fields :	>>Proteasome;>>Alzheimer disease;>>Parkinson disease;>>Amyotrophic lateral sclerosis;>>Huntington disease;>>Spinocerebellar ataxia;>>Prion disease;>>Pathways of neurodegeneration - multiple diseases
Gene Name :	PSMA8 PSMA7L
Protein Name :	PSA7L
Human Gene Id :	143471
Human Swiss Prot No :	Q8TAA3
Mouse Gene Id :	73677
Mouse Swiss Prot No :	Q9CWH6
Immunogen :	Synthesized peptide derived from human PSA7L AA range: 155-205
Specificity :	This antibody detects endogenous levels of PSA7L at Human/Mouse
Formulation :	Liquid in PBS containing 50% glycerol, 0.5% BSA and 0.02% sodium azide.
Source :	Polyclonal, Rabbit,IgG
Dilution :	WB 1:500-2000;IHC 1:50-300
Purification :	The antibody was affinity-purified from rabbit antiserum by affinity-chromatography using epitope-specific immunogen.
Concentration :	1 mg/ml

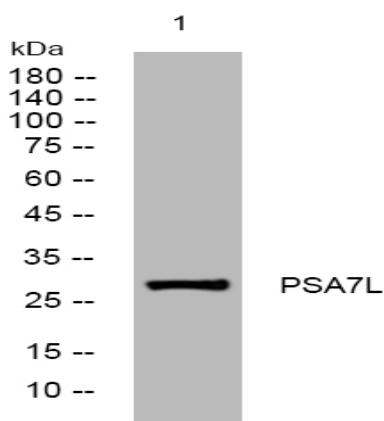
Storage Stability : -15°C to -25°C/1 year(Do not lower than -25°C)

Molecularweight : 28kD

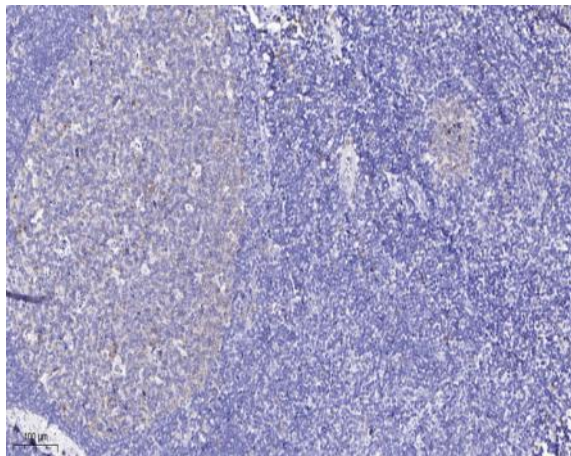
Function : alternative products:Experimental confirmation may be lacking for some isoforms,catalytic activity:Cleavage of peptide bonds with very broad specificity.,function:The proteasome is a multicatalytic proteinase complex which is characterized by its ability to cleave peptides with Arg, Phe, Tyr, Leu, and Glu adjacent to the leaving group at neutral or slightly basic pH. The proteasome has an ATP-dependent proteolytic activity (By similarity). This may be a testis-specific subunit.,similarity:Belongs to the peptidase T1A family.,subunit:The 26S proteasome consists of a 20S proteasome core and two 19S regulatory subunits. The 20S proteasome core is composed of 28 subunits that are arranged in four stacked rings, resulting in a barrel-shaped structure. The two end rings are each formed by seven alpha subunits, and the two central rings are each formed by seven beta subunits. The catalytic cham

Subcellular Location : Nucleus . Localizes to the central region of the synaptonemal complex .

Products Images



Western blot analysis of lysates from HpeG2 cells, primary antibody was diluted at 1:1000, 4° over night



Immunohistochemical analysis of paraffin-embedded human tonsil. 1, Antibody was diluted at 1:200(4° overnight). 2, Tris-EDTA,pH9.0 was used for antigen retrieval. 3,Secondary antibody was diluted at 1:200(room temperature, 45min).