

**MOT10 rabbit pAb**

<b>Catalog No :</b>	YT7177
<b>Reactivity :</b>	Human;Mouse;Rat
<b>Applications :</b>	WB;IHC
<b>Target :</b>	MOT10
<b>Fields :</b>	>>Thyroid hormone signaling pathway;>>Protein digestion and absorption
<b>Gene Name :</b>	SLC16A10 MCT10 TAT1
<b>Protein Name :</b>	MOT10
<b>Human Gene Id :</b>	117247
<b>Human Swiss Prot No :</b>	Q8TF71
<b>Mouse Gene Id :</b>	72472
<b>Mouse Swiss Prot No :</b>	Q3U9N9
<b>Rat Gene Id :</b>	170566
<b>Rat Swiss Prot No :</b>	Q91Y77
<b>Immunogen :</b>	Synthesized peptide derived from human MOT10 AA range: 163-213
<b>Specificity :</b>	This antibody detects endogenous levels of MOT10 at Human/Mouse/Rat
<b>Formulation :</b>	Liquid in PBS containing 50% glycerol, 0.5% BSA and 0.02% sodium azide.
<b>Source :</b>	Polyclonal, Rabbit,IgG
<b>Dilution :</b>	WB 1:500-2000;IHC 1:50-300
<b>Purification :</b>	The antibody was affinity-purified from rabbit antiserum by affinity-

chromatography using epitope-specific immunogen.

**Concentration :** 1 mg/ml

**Storage Stability :** -15°C to -25°C/1 year (Do not lower than -25°C)

**Molecularweight :** 57kD

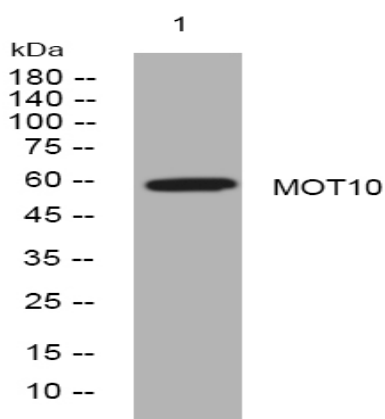
**Background :** SLC16A10 is a member of a family of plasma membrane amino acid transporters that mediate the Na(+)-independent transport of aromatic amino acids across the plasma membrane. [supplied by OMIM, Apr 2004],

**Function :** function: Sodium-independent transporter that mediates the uptake of aromatic acid. Can function as a net efflux pathway for aromatic amino acids in the basolateral epithelial cells., PTM: Not N-glycosylated., similarity: Belongs to the major facilitator superfamily. Monocarboxylate porter (TC 2.A.1.13) family., tissue specificity: Strongly expressed in kidney and skeletal muscle and at lower level in placenta and heart.,

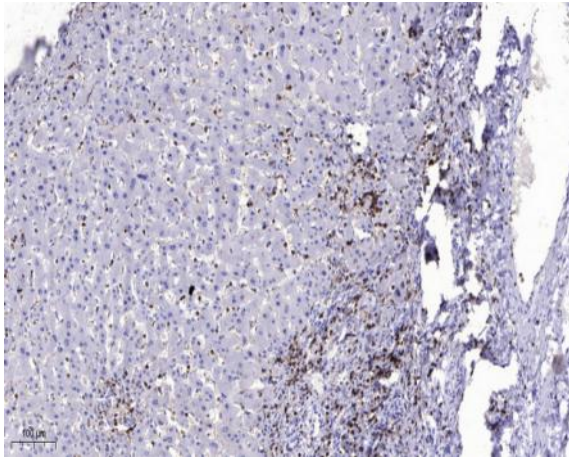
**Subcellular Location :** Cell membrane ; Multi-pass membrane protein . Basolateral cell membrane .

**Expression :** Strongly expressed in kidney and skeletal muscle and at lower level in placenta and heart.

## Products Images



Western blot analysis of lysates from 293T cells, primary antibody was diluted at 1:1000, 4°C over night



Immunohistochemical analysis of paraffin-embedded human liver cancer. 1, Antibody was diluted at 1:200(4° overnight). 2, Tris-EDTA,pH9.0 was used for antigen retrieval. 3,Secondary antibody was diluted at 1:200(room temperature, 45min).