

## SMUF2 rabbit pAb

<b>Catalog No :</b>	YT7176
<b>Reactivity :</b>	Human;Mouse
<b>Applications :</b>	WB;IHC
<b>Target :</b>	SMUF2
<b>Fields :</b>	>>Ubiquitin mediated proteolysis;>>Endocytosis;>>Hedgehog signaling pathway;>>TGF-beta signaling pathway
<b>Gene Name :</b>	SMURF2
<b>Protein Name :</b>	SMUF2
<b>Human Gene Id :</b>	64750
<b>Human Swiss Prot No :</b>	Q9HAU4
<b>Mouse Gene Id :</b>	66313
<b>Mouse Swiss Prot No :</b>	A2A5Z6
<b>Immunogen :</b>	Synthesized peptide derived from human SMUF2 AA range: 505-555
<b>Specificity :</b>	This antibody detects endogenous levels of SMUF2 at Human/Mouse
<b>Formulation :</b>	Liquid in PBS containing 50% glycerol, 0.5% BSA and 0.02% sodium azide.
<b>Source :</b>	Polyclonal, Rabbit,IgG
<b>Dilution :</b>	WB 1:500-2000;IHC 1:50-300
<b>Purification :</b>	The antibody was affinity-purified from rabbit antiserum by affinity-chromatography using epitope-specific immunogen.
<b>Concentration :</b>	1 mg/ml

**Storage Stability :** -15°C to -25°C/1 year(Do not lower than -25°C)

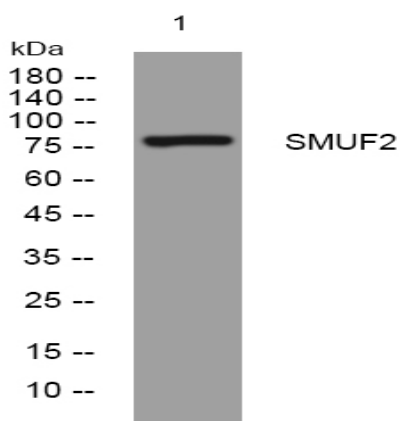
**Molecularweight :** 82kD

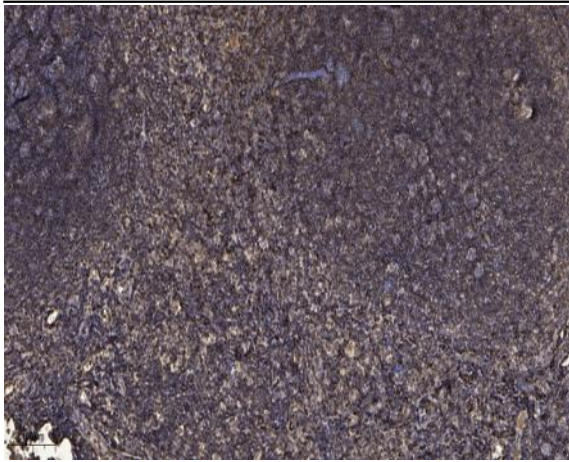
**Function :** domain:The C2 domain is involved in autoinhibition of the catalytic activity by interacting with the HECT domain.,domain:The second and third WW domains are responsible for interaction with the PY-motif of R-SMAD (SMAD1, SMAD2 and SMAD3).,function:E3 ubiquitin-protein ligase which accepts ubiquitin from an E2 ubiquitin-conjugating enzyme in the form of a thioester and then directly transfers the ubiquitin to targeted substrates. Interacts with SMAD1 and SMAD7 in order to trigger their ubiquitination and proteasome-dependent degradation. In addition, interaction with SMAD7 activates autocatalytic degradation, which is prevented by interaction with SCYE1. Forms a stable complex with the TGF-beta receptor-mediated phosphorylated SMAD2 and SMAD3. In this way, SMAD2 may recruit substrates, such as SNON, for ubiquitin-mediated degradation. Enhances the inhibitory activity of SMAD7 and reduces

**Subcellular Location :** Nucleus . Cytoplasm . Cell membrane . Membrane raft . Cytoplasmic in the presence of SMAD7. Colocalizes with CAV1, SMAD7 and TGF-beta receptor in membrane rafts.

**Expression :** Widely expressed.

## Products Images





Immunohistochemical analysis of paraffin-embedded human tonsil. 1, Antibody was diluted at 1:200(4 ° overnight). 2, Tris-EDTA,pH9.0 was used for antigen retrieval. 3,Secondary antibody was diluted at 1:200(room temperature, 45min).