

STX12 rabbit pAb

Catalog No :	YT7174
Reactivity :	Human;Mouse;Rat
Applications :	WB;ELISA;IHC
Target :	STX12
Fields :	>>Phagosome
Gene Name :	STX12
Protein Name :	STX12
Human Gene Id :	23673
Human Swiss Prot No :	Q86Y82
Mouse Gene Id :	100226
Mouse Swiss Prot No :	Q9ER00
Rat Gene Id :	65033
Rat Swiss Prot No :	G3V7P1
Immunogen :	Synthesized peptide derived from human STX12 AA range: 56-106
Specificity :	This antibody detects endogenous levels of STX12 at Human/Mouse/Rat
Formulation :	Liquid in PBS containing 50% glycerol, 0.5% BSA and 0.02% sodium azide.
Source :	Polyclonal, Rabbit,IgG
Dilution :	WB 1:500-2000;IHC 1:50-300; ELISA 2000-20000
Purification :	The antibody was affinity-purified from rabbit antiserum by affinity-

chromatography using epitope-specific immunogen.

Concentration : 1 mg/ml

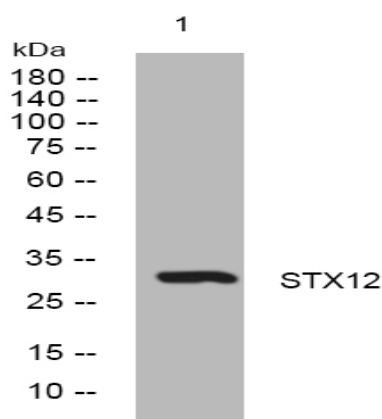
Storage Stability : -15°C to -25°C/1 year(Do not lower than -25°C)

Molecularweight : 30kD

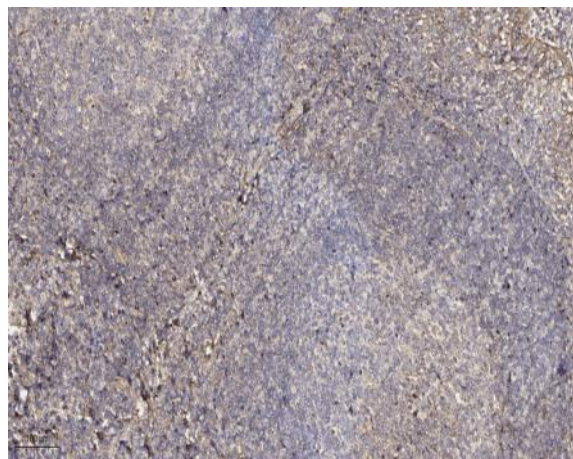
Function : function:SNARE that acts to regulate protein transport between late endosomes and the trans-Golgi network.,similarity:Belongs to the syntaxin family.,similarity:Contains 1 t-SNARE coiled-coil homology domain.,

Subcellular Location : Endosome membrane; Single-pass type IV membrane protein . Golgi apparatus membrane; Single-pass type IV membrane protein . Endomembrane system ; Single-pass type IV membrane protein ; Cytoplasmic side . Early endosome membrane ; Single-pass type IV membrane protein . Recycling endosome membrane ; Single-pass type IV membrane protein .

Products Images



Western blot analysis of lysates from K562 cells, primary antibody was diluted at 1:1000, 4° over night



Immunohistochemical analysis of paraffin-embedded human tonsil. 1, Antibody was diluted at 1:200(4° overnight). 2, Tris-EDTA,pH9.0 was used for antigen retrieval. 3,Secondary antibody was diluted at 1:200(room temperature, 45min).