

## KLD10 rabbit pAb

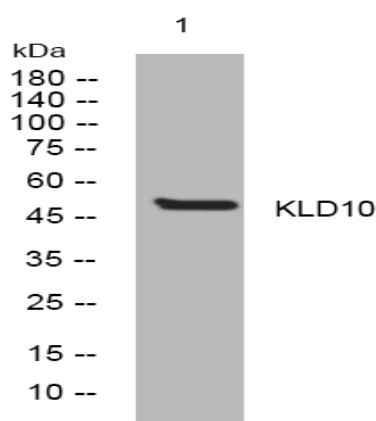
<b>Catalog No :</b>	YT7173
<b>Reactivity :</b>	Human;Mouse;Rat
<b>Applications :</b>	WB;IHC
<b>Target :</b>	KLD10
<b>Gene Name :</b>	KLHDC10 KIAA0265
<b>Protein Name :</b>	KLD10
<b>Human Gene Id :</b>	23008
<b>Human Swiss Prot No :</b>	Q6PID8
<b>Mouse Gene Id :</b>	76788
<b>Mouse Swiss Prot No :</b>	Q6PAR0
<b>Rat Gene Id :</b>	312199
<b>Rat Swiss Prot No :</b>	Q5U3Y0
<b>Immunogen :</b>	Synthesized peptide derived from human KLD10 AA range: 9-59
<b>Specificity :</b>	This antibody detects endogenous levels of KLD10 at Human/Mouse/Rat
<b>Formulation :</b>	Liquid in PBS containing 50% glycerol, 0.5% BSA and 0.02% sodium azide.
<b>Source :</b>	Polyclonal, Rabbit,IgG
<b>Dilution :</b>	WB 1:500-2000;IHC 1:50-300
<b>Purification :</b>	The antibody was affinity-purified from rabbit antiserum by affinity-chromatography using epitope-specific immunogen.

---

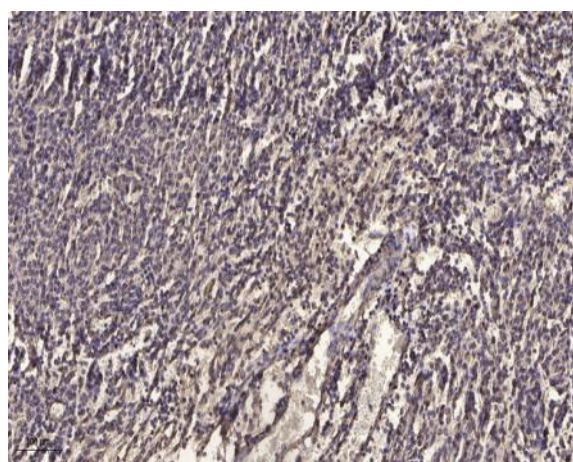
<b>Concentration :</b>	<u>1 mg/ml</u>
<b>Storage Stability :</b>	<u>-15°C to -25°C/1 year(Do not lower than -25°C)</u>
<b>Molecularweight :</b>	<u>49kD</u>
<b>Function :</b>	<u>developmental stage:Expressed in fetal brain, liver, lung, kidney and placenta.,similarity:Contains 6 Kelch repeats.,</u>
<b>Subcellular Location :</b>	<u>Nucleus . Cytoplasm .</u>

---

## Products Images



Western blot analysis of lysates from HpeG2 cells, primary antibody was diluted at 1:1000, 4° over night



Immunohistochemical analysis of paraffin-embedded human meningioma. 1, Antibody was diluted at 1:200(4° overnight). 2, Tris-EDTA,pH9.0 was used for antigen retrieval. 3,Secondary antibody was diluted at 1:200(room temperature, 45min).