

## RNF10 rabbit pAb

<b>Catalog No :</b>	YT7172
<b>Reactivity :</b>	Human;Mouse;Rat
<b>Applications :</b>	WB;ELISA;IHC
<b>Target :</b>	RNF10
<b>Gene Name :</b>	RNF10 KIAA0262 RIE2
<b>Protein Name :</b>	RNF10
<b>Human Gene Id :</b>	9921
<b>Human Swiss Prot No :</b>	Q8N5U6
<b>Mouse Gene Id :</b>	50849
<b>Mouse Swiss Prot No :</b>	Q3UIW5
<b>Rat Gene Id :</b>	288710
<b>Rat Swiss Prot No :</b>	Q5XI59
<b>Immunogen :</b>	Synthesized peptide derived from human RNF10 AA range: 294-344
<b>Specificity :</b>	This antibody detects endogenous levels of RNF10 at Human/Mouse/Rat
<b>Formulation :</b>	Liquid in PBS containing 50% glycerol, 0.5% BSA and 0.02% sodium azide.
<b>Source :</b>	Polyclonal, Rabbit,IgG
<b>Dilution :</b>	WB 1:500-2000;IHC 1:50-300; ELISA 2000-20000
<b>Purification :</b>	The antibody was affinity-purified from rabbit antiserum by affinity-chromatography using epitope-specific immunogen.

**Concentration :** 1 mg/ml

**Storage Stability :** -15°C to -25°C/1 year(Do not lower than -25°C)

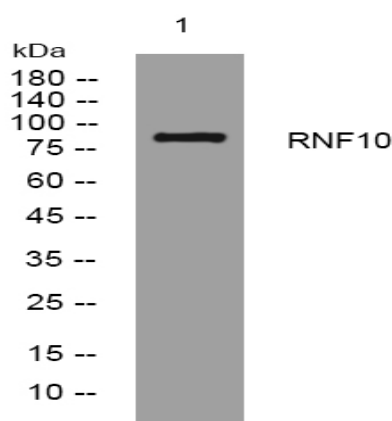
**Molecularweight :** 89kD

**Background :** The protein encoded by this gene contains a ring finger motif, which is known to be involved in protein-protein interactions. The specific function of this protein has not yet been determined. EST data suggests the existence of multiple alternatively spliced transcript variants, however, their full length nature is not known. [provided by RefSeq, Jul 2008],

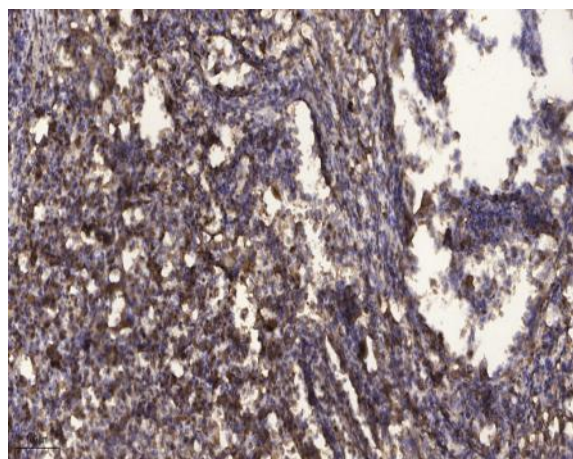
**Function :** similarity:Belongs to the RNF10 family.,similarity:Contains 1 RING-type zinc finger.,subunit:Interacts with MEOX2.,

**Subcellular Location :** Cytoplasm . Nucleus .

## Products Images



Western blot analysis of lysates from Jurkat cells, primary antibody was diluted at 1:1000, 4° over night



Immunohistochemical analysis of paraffin-embedded human Squamous cell carcinoma of lung. 1, Antibody was diluted at 1:200(4° overnight). 2, Tris-EDTA,pH9.0 was used for antigen retrieval. 3,Secondary antibody was diluted at 1:200(room temperature, 45min).