

**DYL1 rabbit pAb**

<b>Catalog No :</b>	YT7171
<b>Reactivity :</b>	Human;Mouse;Rat
<b>Applications :</b>	IHC;IF
<b>Target :</b>	DYL1
<b>Fields :</b>	>>Vasopressin-regulated water reabsorption;>>Salmonella infection
<b>Gene Name :</b>	DYNLL1 DLC1 DNCL1 DNCLC1 HDLC1
<b>Protein Name :</b>	DYL1
<b>Human Gene Id :</b>	8655
<b>Human Swiss Prot No :</b>	P63167
<b>Mouse Gene Id :</b>	56455
<b>Mouse Swiss Prot No :</b>	P63168
<b>Rat Gene Id :</b>	58945
<b>Rat Swiss Prot No :</b>	P63170
<b>Immunogen :</b>	Synthesized peptide derived from human DYL1 AA range: 1-50
<b>Specificity :</b>	This antibody detects endogenous levels of DYL1 at Human/Mouse/Rat
<b>Formulation :</b>	Liquid in PBS containing 50% glycerol, 0.5% BSA and 0.02% sodium azide.
<b>Source :</b>	Polyclonal, Rabbit,IgG
<b>Dilution :</b>	IHC 1:50-200. IF 1:50-200
<b>Purification :</b>	The antibody was affinity-purified from rabbit antiserum by affinity-

chromatography using epitope-specific immunogen.

---

**Concentration :** 1 mg/ml

---

**Storage Stability :** -15°C to -25°C/1 year(Do not lower than -25°C)

---

**Molecularweight :** 10kD

---

**Background :** Cytoplasmic dyneins are large enzyme complexes with a molecular mass of about 1,200 kD. They contain two force-producing heads formed primarily from dynein heavy chains, and stalks linking the heads to a basal domain, which contains a varying number of accessory intermediate chains. The complex is involved in intracellular transport and motility. The protein described in this record is a light chain and exists as part of this complex but also physically interacts with and inhibits the activity of neuronal nitric oxide synthase. Binding of this protein destabilizes the neuronal nitric oxide synthase dimer, a conformation necessary for activity, and it may regulate numerous biologic processes through its effects on nitric oxide synthase activity. Alternate transcriptional splice variants have been characterized. [provided by RefSeq, Jul 2008],

---

**Function :** function: Binds and inhibits the catalytic activity of neuronal nitric oxide synthase., function: May be involved in some aspects of dynein-related intracellular transport and motility. May play a role in changing or maintaining the spatial distribution of cytoskeletal structures., similarity: Belongs to the dynein light chain family., subunit: Consists of at least two heavy chains and a number of intermediate and light chains. Interacts with rabies P protein (By similarity). Interacts with TXNDC17., tissue specificity: Ubiquitous.,

---

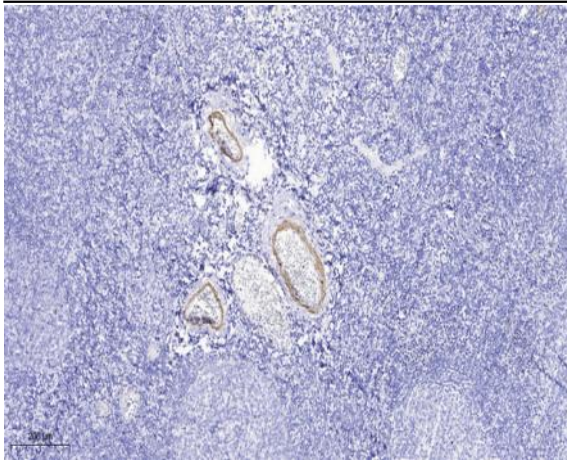
**Subcellular Location :** Cytoplasm, cytoskeleton, microtubule organizing center, centrosome . Cytoplasm, cytoskeleton . Nucleus . Mitochondrion . Upon induction of apoptosis translocates together with BCL2L11 to mitochondria. .

---

**Expression :** Ubiquitous (PubMed:8628263). Expressed in testis (PubMed:22965910).

---

## Products Images



Immunohistochemical analysis of paraffin-embedded human tonsil. 1, Antibody was diluted at 1:200(4° overnight). 2, Tris-EDTA,pH9.0 was used for antigen retrieval. 3,Secondary antibody was diluted at 1:200(room temperature, 30min).