

## SAMN1 rabbit pAb

<b>Catalog No :</b>	YT7167
<b>Reactivity :</b>	Human;Mouse
<b>Applications :</b>	WB
<b>Target :</b>	SAMN1
<b>Gene Name :</b>	SAMSN1 HACS1
<b>Protein Name :</b>	SAMN1
<b>Human Gene Id :</b>	64092
<b>Human Swiss Prot No :</b>	Q9NSI8
<b>Mouse Gene Id :</b>	67742
<b>Mouse Swiss Prot No :</b>	P57725
<b>Immunogen :</b>	Synthesized peptide derived from human SAMN1 AA range: 316-366
<b>Specificity :</b>	This antibody detects endogenous levels of SAMN1 at Human/Mouse
<b>Formulation :</b>	Liquid in PBS containing 50% glycerol, 0.5% BSA and 0.02% sodium azide.
<b>Source :</b>	Polyclonal, Rabbit,IgG
<b>Dilution :</b>	WB 1:500-2000
<b>Purification :</b>	The antibody was affinity-purified from rabbit antiserum by affinity-chromatography using epitope-specific immunogen.
<b>Concentration :</b>	1 mg/ml
<b>Storage Stability :</b>	-15°C to -25°C/1 year(Do not lower than -25°C)

**Molecularweight :** 41kD

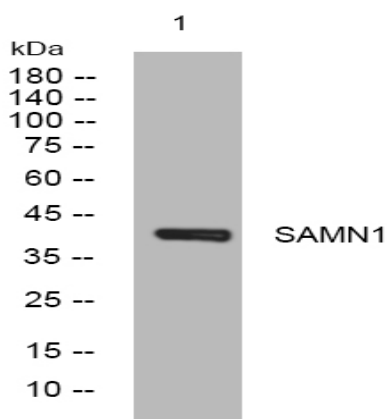
**Background :** SAMSN1 is a member of a novel gene family of putative adaptors and scaffold proteins containing SH3 and SAM (sterile alpha motif) domains (Claudio et al., 2001 [PubMed 11536050]).[supplied by OMIM, Mar 2008],

**Function :** similarity:Contains 1 SAM (sterile alpha motif) domain.,similarity:Contains 1 SH3 domain.,

**Subcellular Location :** Nucleus . Cytoplasm . Cell projection, ruffle . Shuttles between cytoplasm and nucleus. Colocalizes with the actin cytoskeleton and actin-rich membrane ruffles (By similarity). .

**Expression :** Detected in peripheral blood B-cells (at protein level). Detected in spleen, liver and peripheral blood.

## Products Images



Western blot analysis of lysates from HEK293 cells, primary antibody was diluted at 1:1000, 4° over night