

TB22A rabbit pAb

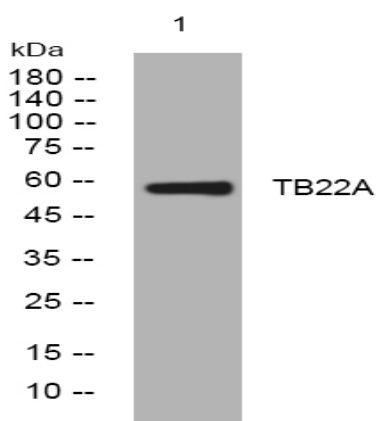
| | |
|------------------------------|---|
| Catalog No : | YT7164 |
| Reactivity : | Human;Mouse |
| Applications : | WB |
| Target : | TB22A |
| Gene Name : | TBC1D22A C22orf4 |
| Protein Name : | TB22A |
| Human Gene Id : | 25771 |
| Human Swiss Prot No : | Q8WUA7 |
| Mouse Gene Id : | 223754 |
| Mouse Swiss Prot No : | Q8R5A6 |
| Immunogen : | Synthesized peptide derived from human TB22A AA range: 49-99 |
| Specificity : | This antibody detects endogenous levels of TB22A at Human/Mouse |
| Formulation : | Liquid in PBS containing 50% glycerol, 0.5% BSA and 0.02% sodium azide. |
| Source : | Polyclonal, Rabbit,IgG |
| Dilution : | WB 1[?]500-2000 |
| Purification : | The antibody was affinity-purified from rabbit antiserum by affinity-chromatography using epitope-specific immunogen. |
| Concentration : | 1 mg/ml |
| Storage Stability : | -15°C to -25°C/1 year(Do not lower than -25°C) |

Molecularweight : 57kD

Function : function:May act as a GTPase-activating protein for Rab family protein(s).,similarity:Contains 1 Rab-GAP TBC domain.,

Subcellular Location : intracellular,endomembrane system,

Products Images



Western blot analysis of lysates from PC-12 cells, primary antibody was diluted at 1:1000, 4° over night