

CLCA3 rabbit pAb

| | |
|------------------------------|---|
| Catalog No : | YT7163 |
| Reactivity : | Human |
| Applications : | WB |
| Target : | CLCA3 |
| Gene Name : | CLCA3P CLCA3 |
| Protein Name : | CLCA3 |
| Human Swiss Prot No : | Q9Y6N3 |
| Immunogen : | Synthesized peptide derived from human CLCA3 AA range: 56-106 |
| Specificity : | This antibody detects endogenous levels of CLCA3 at Human |
| Formulation : | Liquid in PBS containing 50% glycerol, 0.5% BSA and 0.02% sodium azide. |
| Source : | Polyclonal, Rabbit,IgG |
| Dilution : | WB 1:500-2000 |
| Purification : | The antibody was affinity-purified from rabbit antiserum by affinity-chromatography using epitope-specific immunogen. |
| Concentration : | 1 mg/ml |
| Storage Stability : | -15°C to -25°C/1 year(Do not lower than -25°C) |
| Molecularweight : | 29kD |
| Background : | This gene is a transcribed pseudogene belonging to the calcium sensitive chloride conductance protein family. To date, all members of this gene family map to the same site on chromosome 1p31-p22 and share high degrees of homology in size, sequence and predicted structure, but differ significantly in their tissue distributions. This gene contains several nonsense codons compared to other |

family members that render the transcript a candidate for nonsense-mediated mRNA decay (NMD). Therefore, this gene is unlikely to be protein-coding. [provided by RefSeq, Jan 2009],

Function :

PTM:N-glycosylated.,similarity:Belongs to the CLCR family.,tissue specificity:Expressed in the lung, trachea, spleen, thymus and mammary gland.,

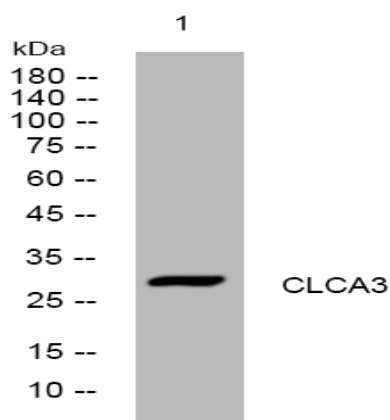
Subcellular Location :

Secreted .

Expression :

Expressed in the lung, trachea, spleen, thymus and mammary gland.

Products Images



Western blot analysis of lysates from U2OS cells, primary antibody was diluted at 1:1000, 4° over night