

ARL8B rabbit pAb

Catalog No :	YT7155
Reactivity :	Human;Mouse;Rat
Applications :	WB
Target :	ARL8B
Fields :	>>Salmonella infection
Gene Name :	ARL8B ARL10C GIE1
Protein Name :	ARL8B
Human Gene Id :	55207
Human Swiss Prot No :	Q9NVJ2
Mouse Gene Id :	67166
Mouse Swiss Prot No :	Q9CQW2
Rat Gene Id :	500282
Rat Swiss Prot No :	Q66HA6
Immunogen :	Synthesized peptide derived from human ARL8B AA range: 9-59
Specificity :	This antibody detects endogenous levels of ARL8B at Human/Mouse/Rat
Formulation :	Liquid in PBS containing 50% glycerol, 0.5% BSA and 0.02% sodium azide.
Source :	Polyclonal, Rabbit,IgG
Dilution :	WB 1[?]500-2000
Purification :	The antibody was affinity-purified from rabbit antiserum by affinity-

chromatography using epitope-specific immunogen.

Concentration : 1 mg/ml

Storage Stability : -15°C to -25°C/1 year (Do not lower than -25°C)

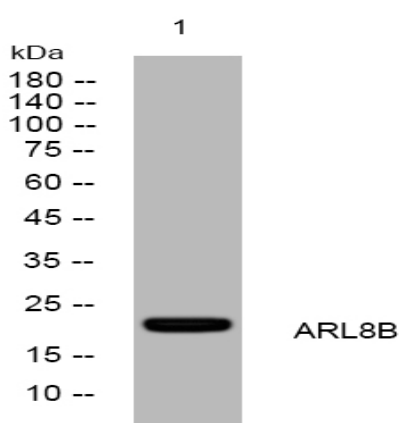
Molecularweight : 20kD

Function : function: May play a role in lysosomes motility (PubMed:16537643). May play a role in chromosomes segregation (PubMed:15331635)., similarity: Belongs to the small GTPase superfamily. Arf family., subcellular location: According to PubMed:15331635 it localizes with microtubules at the spindle mid-zone during mitosis., subunit: Interacts with tubulin., tissue specificity: Ubiquitously expressed.,

Subcellular Location : Late endosome membrane . Lysosome membrane . Cytoplasm, cytoskeleton, spindle . Cell projection, axon . Cell junction, synapse . Cytolytic granule membrane . GTP-bound form resides on lysosomal membranes, whereas GDP-bound form is likely associated with microtubular structures (PubMed:16650381). Localizes with microtubules at the spindle mid-zone during mitosis. In dendritic cells, localizes to MHC II+ compartments (By similarity). .

Expression : Ubiquitously expressed.

Products Images



Western blot analysis of lysates from K562 cells, primary antibody was diluted at 1:1000, 4° over night