

## KRA54 rabbit pAb

<b>Catalog No :</b>	YT7151
<b>Reactivity :</b>	Human;Mouse
<b>Applications :</b>	WB;IHC
<b>Target :</b>	KRA54
<b>Gene Name :</b>	KRTAP5-4 KAP5.4 KRTAP5.4
<b>Protein Name :</b>	KRA54
<b>Human Gene Id :</b>	387267
<b>Human Swiss Prot No :</b>	Q6L8H1
<b>Mouse Gene Id :</b>	50775
<b>Mouse Swiss Prot No :</b>	Q62220
<b>Immunogen :</b>	Synthesized peptide derived from human KRA54 AA range: 217-267
<b>Specificity :</b>	This antibody detects endogenous levels of KRA54 at Human/Mouse
<b>Formulation :</b>	Liquid in PBS containing 50% glycerol, 0.5% BSA and 0.02% sodium azide.
<b>Source :</b>	Polyclonal, Rabbit,IgG
<b>Dilution :</b>	WB 1:500-2000;IHC 1:50-300
<b>Purification :</b>	The antibody was affinity-purified from rabbit antiserum by affinity-chromatography using epitope-specific immunogen.
<b>Concentration :</b>	1 mg/ml
<b>Storage Stability :</b>	-15°C to -25°C/1 year(Do not lower than -25°C)

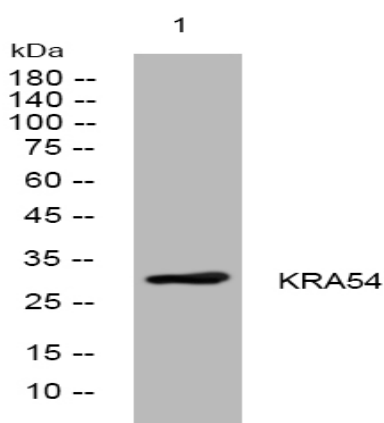
**Molecularweight :** 32kD

**Function :** function:In the hair cortex, hair keratin intermediate filaments are embedded in an interfilamentous matrix, consisting of hair keratin-associated protein (KRTAP), which are essential for the formation of a rigid and resistant hair shaft through their extensive disulfide bond cross-linking with abundant cysteine residues of hair keratins. The matrix proteins include the high-sulfur and high-glycine-tyrosine keratins.,similarity:Belongs to the KRTAP type 5 family.,subunit:Interacts with hair keratins.,tissue specificity:Restricted to hair root, not detected in any other tissues.,

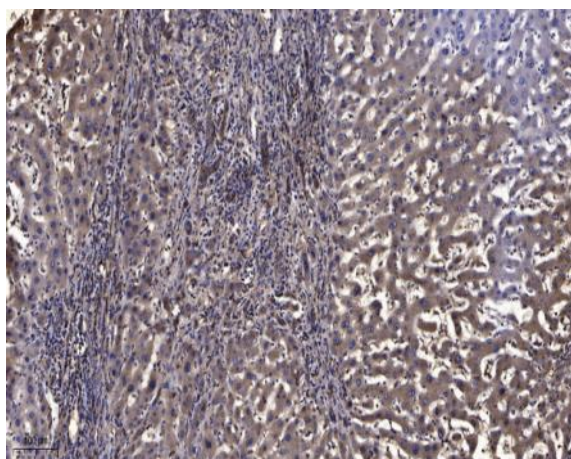
**Subcellular Location :** keratin filament,

**Expression :** Restricted to hair root, not detected in any other tissues.

## Products Images



Western blot analysis of lysates from KB cells, primary antibody was diluted at 1:1000, 4° over night



Immunohistochemical analysis of paraffin-embedded human liver cancer. 1, Antibody was diluted at 1:200(4° overnight). 2, Tris-EDTA,pH9.0 was used for antigen retrieval. 3,Secondary antibody was diluted at 1:200(room temperature, 45min).