

KR131 rabbit pAb

Catalog No :	YT7150
Reactivity :	Human
Applications :	WB;ELISA;IHC
Target :	KR131
Gene Name :	KRTAP13-1 KAP13.1 KRTAP13.1
Protein Name :	KR131
Human Gene Id :	140258
Human Swiss Prot No :	Q8IUC0
Immunogen :	Synthesized peptide derived from human KR131 AA range: 99-149
Specificity :	This antibody detects endogenous levels of KR131 at Human
Formulation :	Liquid in PBS containing 50% glycerol, 0.5% BSA and 0.02% sodium azide.
Source :	Polyclonal, Rabbit,IgG
Dilution :	WB 1:500-2000;IHC 1:50-300; ELISA 2000-20000
Purification :	The antibody was affinity-purified from rabbit antiserum by affinity-chromatography using epitope-specific immunogen.
Concentration :	1 mg/ml
Storage Stability :	-15 °C to -25 °C/1 year(Do not lower than -25 °C)
Molecularweight :	19kD
Background :	Hair keratins and hair keratin-associated proteins (KAPs), such as KRTAP13-1, are the main structural proteins of hair fibers (Rogers et al., 2002 [PubMed 12359730]).[supplied by OMIM, Mar 2008],

Function :

caution:The sequence of 1-41 of PubMed:12359730 has not been submitted.,function:In the hair cortex, hair keratin intermediate filaments are embedded in an interfilamentous matrix, consisting of hair keratin-associated proteins (KRTAP), which are essential for the formation of a rigid and resistant hair shaft through their extensive disulfide bond cross-linking with abundant cysteine residues of hair keratins. The matrix proteins include the high-sulfur and high-glycine-tyrosine keratins.,similarity:Belongs to the PMG family.,subunit:Interacts with hair keratins.,tissue specificity:Weak expression seen in the late matrix and entire cortex area of the hair follicle.,

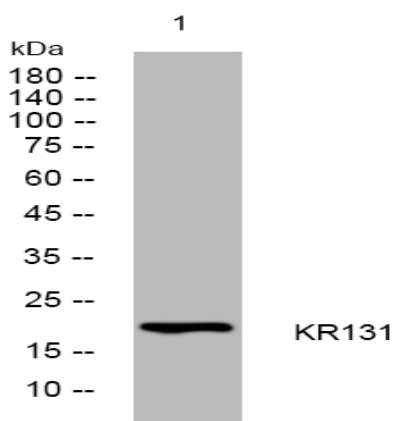
Subcellular Location :

intermediate filament,

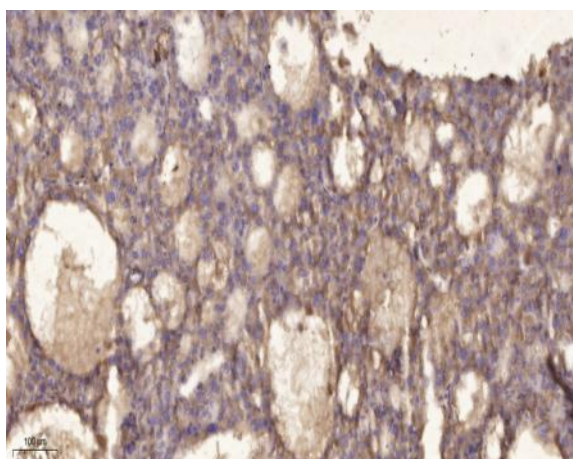
Expression :

Weak expression seen in the late matrix and entire cortex area of the hair follicle.

Products Images



Western blot analysis of lysates from SW480 cells, primary antibody was diluted at 1:1000, 4° over night



Immunohistochemical analysis of paraffin-embedded human liver cancer. 1, Antibody was diluted at 1:200(4° overnight). 2, Tris-EDTA,pH9.0 was used for antigen retrieval. 3,Secondary antibody was diluted at 1:200(room temperature, 45min).