

TMM64 rabbit pAb

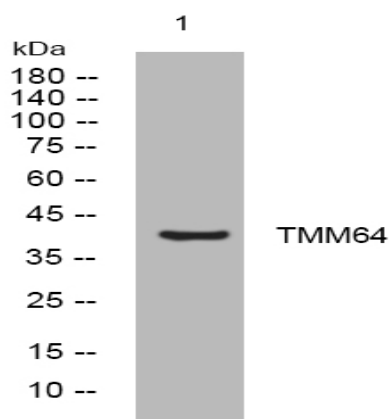
Catalog No :	YT7145
Reactivity :	Human;Mouse
Applications :	WB
Target :	TMM64
Gene Name :	TMEM64
Protein Name :	TMM64
Human Gene Id :	169200
Human Swiss Prot No :	Q6YI46
Mouse Gene Id :	100201
Mouse Swiss Prot No :	Q3U145
Immunogen :	Synthesized peptide derived from human TMM64 AA range: 91-141
Specificity :	This antibody detects endogenous levels of TMM64 at Human/Mouse
Formulation :	Liquid in PBS containing 50% glycerol, 0.5% BSA and 0.02% sodium azide.
Source :	Polyclonal, Rabbit,IgG
Dilution :	WB 1[?]500-2000
Purification :	The antibody was affinity-purified from rabbit antiserum by affinity-chromatography using epitope-specific immunogen.
Concentration :	1 mg/ml
Storage Stability :	-15°C to -25°C/1 year(Do not lower than -25°C)

Molecularweight : 42kD

Function : similarity:Belongs to the TVP38/TMEM64 family.,

Subcellular Location : Membrane ; Multi-pass membrane protein . Endoplasmic reticulum .

Products Images



Western blot analysis of lysates from U2OS cells, primary antibody was diluted at 1:1000, 4° over night