

## LIN54 rabbit pAb

<b>Catalog No :</b>	YT7140
<b>Reactivity :</b>	Human;Mouse;Rat
<b>Applications :</b>	WB;ELISA;IHC
<b>Target :</b>	LIN54
<b>Fields :</b>	>>Cellular senescence
<b>Gene Name :</b>	LIN54 CXCDC1 KIAA2037
<b>Protein Name :</b>	LIN54
<b>Human Gene Id :</b>	132660
<b>Human Swiss Prot No :</b>	Q6MZP7
<b>Mouse Gene Id :</b>	231506
<b>Mouse Swiss Prot No :</b>	Q571G4
<b>Rat Gene Id :</b>	305171
<b>Rat Swiss Prot No :</b>	Q641Z1
<b>Immunogen :</b>	Synthesized peptide derived from human LIN54 AA range: 62-112
<b>Specificity :</b>	This antibody detects endogenous levels of LIN54 at Human/Mouse/Rat
<b>Formulation :</b>	Liquid in PBS containing 50% glycerol, 0.5% BSA and 0.02% sodium azide.
<b>Source :</b>	Polyclonal, Rabbit,IgG
<b>Dilution :</b>	WB 1:500-2000;IHC 1:50-300; ELISA 2000-20000
<b>Purification :</b>	The antibody was affinity-purified from rabbit antiserum by affinity-

chromatography using epitope-specific immunogen.

**Concentration :** 1 mg/ml

**Storage Stability :** -15°C to -25°C/1 year (Do not lower than -25°C)

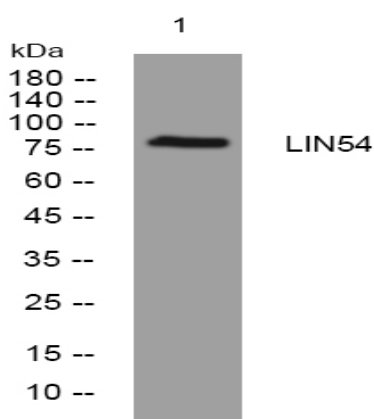
**Molecularweight :** 82kD

**Background :** LIN54 is a component of the LIN, or DREAM, complex, an essential regulator of cell cycle genes (Schmit et al., 2009 [PubMed 19725879]). [supplied by OMIM, Dec 2010],

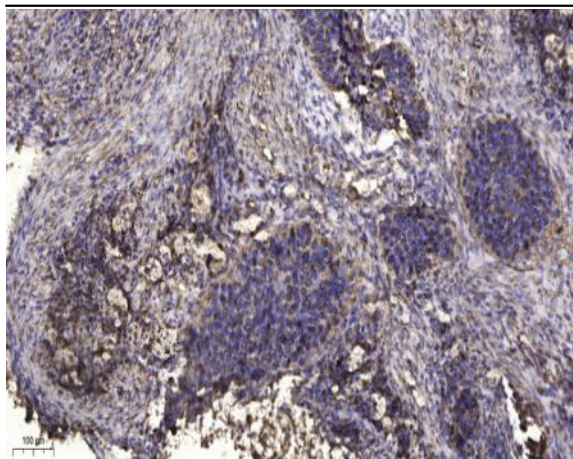
**Function :** function:Component of the DREAM complex, a multiprotein complex that can both act as a transcription activator or repressor depending on the context. In G0 phase, the complex binds to more than 800 promoters and is required for repression of E2F target genes. In S phase, the complex selectively binds to the promoters of G2/M genes whose products are required for mitosis and participates in their cell cycle dependent activation.,similarity:Belongs to the lin-54 family.,similarity:Contains 2 CXC domains.,subunit:Component of the DREAM complex (also named LINC complex) at least composed of E2F4, E2F5, LIN9, LIN37, LIN52, LIN54, MYBL1, MYBL2, RBL1, RBL2, RBBP4, TFDP1 and TFDP2. The complex exists in quiescent cells where it represses cell cycle-dependent genes. It dissociates in S phase when LIN9, LIN37, LIN52 and LIN54 form a subcomplex that binds to MYBL2.,

**Subcellular Location :** Nucleus .

## Products Images



Western blot analysis of lysates from HeLa cells, primary antibody was diluted at 1:1000, 4° over night



Immunohistochemical analysis of paraffin-embedded human Squamous cell carcinoma of lung. 1, Antibody was diluted at 1:200(4° overnight). 2, Tris-EDTA,pH9.0 was used for antigen retrieval. 3,Secondary antibody was diluted at 1:200(room temperature, 45min).