

ORAI2 rabbit pAb

Catalog No :	YT7138
Reactivity :	Human;Mouse
Applications :	WB
Target :	ORAI2
Fields :	>>Calcium signaling pathway
Gene Name :	ORAI2 C7orf19 CBCIP2 TMEM142B PP1729
Protein Name :	ORAI2
Human Gene Id :	80228
Human Swiss Prot No :	Q96SN7
Mouse Gene Id :	269717
Mouse Swiss Prot No :	Q8BH10
Immunogen :	Synthesized peptide derived from human ORAI2 AA range: 39-89
Specificity :	This antibody detects endogenous levels of ORAI2 at Human/Mouse
Formulation :	Liquid in PBS containing 50% glycerol, 0.5% BSA and 0.02% sodium azide.
Source :	Polyclonal, Rabbit,IgG
Dilution :	WB 1[?]500-2000
Purification :	The antibody was affinity-purified from rabbit antiserum by affinity-chromatography using epitope-specific immunogen.
Concentration :	1 mg/ml

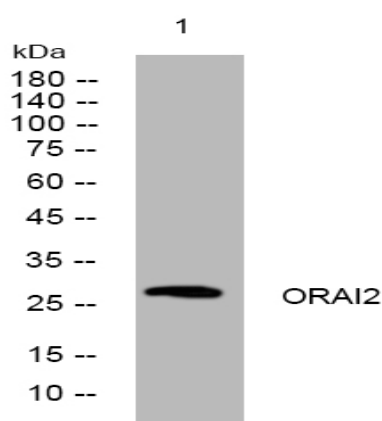
Storage Stability : -15°C to -25°C/1 year(Do not lower than -25°C)

Molecularweight : 28kD

Function : caution:Product of a dubious gene prediction. Encoded in intron of OREI2.,function:Ca(2+) release-activated Ca(2+)-like (CRAC-like) channel subunit which mediates Ca(2+) influx and increase in Ca(2+)-selective current by synergy with the Ca(2+) sensor, STIM1.,similarity:Belongs to the Orai family.,

Subcellular Location : Membrane ; Multi-pass membrane protein .

Products Images



Western blot analysis of lysates from MDA-MB cells, primary antibody was diluted at 1:1000, 4° over night