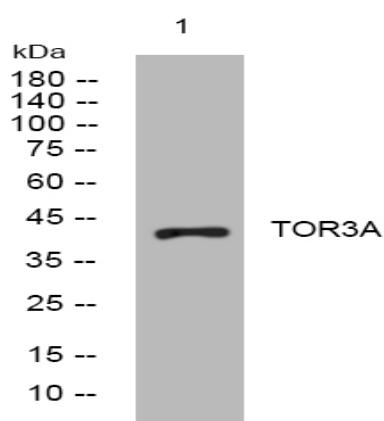


TOR3A rabbit pAb

Catalog No :	YT7137
Reactivity :	Human;Mouse;Rat
Applications :	WB
Target :	TOR3A
Gene Name :	TOR3A ADIR
Protein Name :	TOR3A
Human Gene Id :	64222
Human Swiss Prot No :	Q9H497
Mouse Gene Id :	30935
Mouse Swiss Prot No :	Q9ER38
Rat Gene Id :	304884
Rat Swiss Prot No :	Q5M936
Immunogen :	Synthesized peptide derived from human TOR3A AA range: 151-201
Specificity :	This antibody detects endogenous levels of TOR3A at Human/Mouse/Rat
Formulation :	Liquid in PBS containing 50% glycerol, 0.5% BSA and 0.02% sodium azide.
Source :	Polyclonal, Rabbit,IgG
Dilution :	WB 1:500-2000
Purification :	The antibody was affinity-purified from rabbit antiserum by affinity-chromatography using epitope-specific immunogen.

Concentration :	1 mg/ml
Storage Stability :	-15°C to -25°C/1 year(Do not lower than -25°C)
Molecularweight :	44kD
Function :	similarity:Belongs to the clpA/clpB family. Torsin subfamily.,tissue specificity:Ubiquitously expressed. Highest expression in stomach, salivary glands and lymph nodes. Isoform 2 is expressed in placenta.,
Subcellular Location :	Cytoplasm. Endoplasmic reticulum lumen.
Expression :	Ubiquitously expressed. Highest expression in stomach, salivary glands and lymph nodes. Isoform 2 is expressed in placenta.

Products Images



Western blot analysis of lysates from A431 cells, primary antibody was diluted at 1:1000, 4° over night