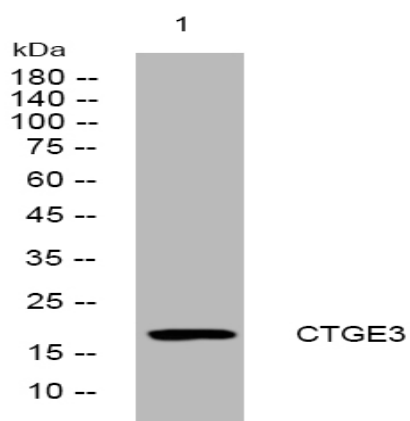


CTGE3 rabbit pAb

Catalog No :	YT7134
Reactivity :	Human
Applications :	WB
Target :	CTGE3
Gene Name :	CTAGE3P CTAGE3
Protein Name :	CTGE3
Human Swiss Prot No :	Q8IX95
Immunogen :	Synthesized peptide derived from human CTGE3 AA range: 76-126
Specificity :	This antibody detects endogenous levels of CTGE3 at Human
Formulation :	Liquid in PBS containing 50% glycerol, 0.5% BSA and 0.02% sodium azide.
Source :	Polyclonal, Rabbit,IgG
Dilution :	WB 1:500-2000
Purification :	The antibody was affinity-purified from rabbit antiserum by affinity-chromatography using epitope-specific immunogen.
Concentration :	1 mg/ml
Storage Stability :	-15°C to -25°C/1 year(Do not lower than -25°C)
Molecularweight :	17kD
Function :	disease:Tumor-associated antigen found in several cutaneous T-cell lymphoma (CTCL). Expressed in 4 of 11 Mycosis fungoides tissues and in a T-zone lymphoma.,function:Tumor-associated antigen.,similarity:Belongs to the cTAGE family.,tissue specificity:Expressed in normal tissues including colon, mammary gland, ovary, placenta, stomach and testis, as well as several fetal tissues.,

Expression :

Expressed in normal tissues including colon, mammary gland, ovary, placenta, stomach and testis, as well as several fetal tissues.

Products Images

Western blot analysis of lysates from A549 cells, primary antibody was diluted at 1:1000, 4° over night