

MYG1 rabbit pAb

Catalog No :	YT7133
Reactivity :	Human;Mouse;Rat
Applications :	WB;ELISA;IHC
Target :	MYG1
Gene Name :	C12orf10
Protein Name :	MYG1
Human Swiss Prot No :	Q9HB07
Mouse Gene Id :	60315
Mouse Swiss Prot No :	Q9JK81
Rat Gene Id :	300258
Rat Swiss Prot No :	Q641W2
Immunogen :	Synthesized peptide derived from human MYG1 AA range: 296-346
Specificity :	This antibody detects endogenous levels of MYG1 at Human/Mouse/Rat
Formulation :	Liquid in PBS containing 50% glycerol, 0.5% BSA and 0.02% sodium azide.
Source :	Polyclonal, Rabbit,IgG
Dilution :	WB 1:500-2000;IHC 1:50-300; ELISA 2000-20000
Purification :	The antibody was affinity-purified from rabbit antiserum by affinity-chromatography using epitope-specific immunogen.
Concentration :	1 mg/ml

Storage Stability : -15°C to -25°C/1 year(Do not lower than -25°C)

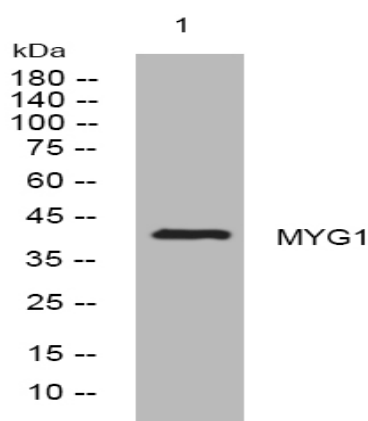
Molecularweight : 41kD

Function : similarity:Belongs to the UPF0160 (MYG1) family.,tissue specificity:Ubiquitously expressed, with highest levels in testis.,

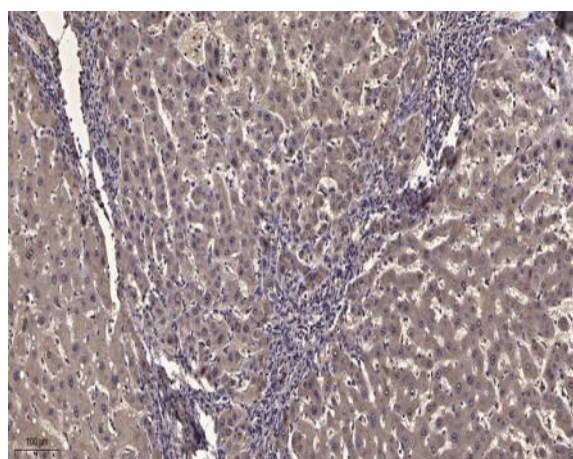
Subcellular Location : Nucleus, nucleoplasm . Mitochondrion matrix . Nucleus, nucleolus .

Expression : Ubiquitously expressed, with highest levels in testis.

Products Images



Western blot analysis of lysates from PC-12 cells, primary antibody was diluted at 1:1000, 4° over night



Immunohistochemical analysis of paraffin-embedded human liver cancer. 1, Antibody was diluted at 1:200(4° overnight). 2, Tris-EDTA,pH9.0 was used for antigen retrieval. 3,Secondary antibody was diluted at 1:200(room temperature, 45min).