

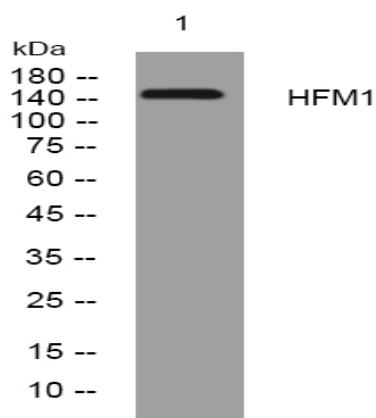
## HFM1 rabbit pAb

<b>Catalog No :</b>	YT7128
<b>Reactivity :</b>	Human;Mouse
<b>Applications :</b>	WB
<b>Target :</b>	HFM1
<b>Gene Name :</b>	HFM1 SEC3D1
<b>Protein Name :</b>	HFM1
<b>Human Gene Id :</b>	164045
<b>Human Swiss Prot No :</b>	A2PYH4
<b>Immunogen :</b>	Synthesized peptide derived from human HFM1 AA range: 943-993
<b>Specificity :</b>	This antibody detects endogenous levels of HFM1 at Human
<b>Formulation :</b>	Liquid in PBS containing 50% glycerol, 0.5% BSA and 0.02% sodium azide.
<b>Source :</b>	Polyclonal, Rabbit,IgG
<b>Dilution :</b>	WB 1[?]500-2000
<b>Purification :</b>	The antibody was affinity-purified from rabbit antiserum by affinity-chromatography using epitope-specific immunogen.
<b>Concentration :</b>	1 mg/ml
<b>Storage Stability :</b>	-15°C to -25°C/1 year(Do not lower than -25°C)
<b>Molecularweight :</b>	158kD
<b>Background :</b>	The protein encoded by this gene is thought to be an ATP-dependent DNA helicase and is expressed mainly in germ-line cells. Defects in this gene are a cause of premature ovarian failure 9 (POF9). [provided by RefSeq, Apr 2014],

**Function :** similarity:Belongs to the helicase family. SKI2 subfamily.,similarity:Contains 1 helicase ATP-binding domain.,similarity:Contains 1 helicase C-terminal domain.,similarity:Contains 1 SEC63 domain.,

**Expression :** Preferentially expressed in testis and ovary.

## Products Images



Western blot analysis of lysates from U2OS cells, primary antibody was diluted at 1:1000, 4° over night