

## LEAP2 rabbit pAb

<b>Catalog No :</b>	YT7121
<b>Reactivity :</b>	Human;Mouse
<b>Applications :</b>	IHC;IF
<b>Target :</b>	LEAP2
<b>Gene Name :</b>	LEAP2
<b>Protein Name :</b>	LEAP2
<b>Human Gene Id :</b>	116842
<b>Human Swiss Prot No :</b>	Q969E1
<b>Mouse Gene Id :</b>	259301
<b>Mouse Swiss Prot No :</b>	Q91V13
<b>Immunogen :</b>	Synthesized peptide derived from human LEAP2 AA range: 21-71
<b>Specificity :</b>	This antibody detects endogenous levels of LEAP2 at Human/Mouse
<b>Formulation :</b>	Liquid in PBS containing 50% glycerol, 0.5% BSA and 0.02% sodium azide.
<b>Source :</b>	Polyclonal, Rabbit,IgG
<b>Dilution :</b>	IHC 1:50-200. IF 1:50-200
<b>Purification :</b>	The antibody was affinity-purified from rabbit antiserum by affinity-chromatography using epitope-specific immunogen.
<b>Concentration :</b>	1 mg/ml
<b>Storage Stability :</b>	-15°C to -25°C/1 year(Do not lower than -25°C)

**Molecularweight :** 8kD

---

**Background :** This gene encodes a cysteine-rich cationic antimicrobial peptide that is expressed predominantly in the liver. The mature peptide has activity against gram-positive bacteria and yeasts. [provided by RefSeq, Sep 2014],

---

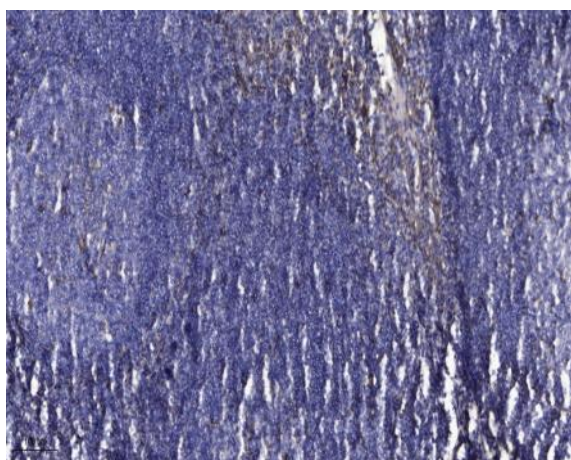
**Function :** function:Has an antimicrobial activity.,similarity:Belongs to the LEAP2 family.,

---

**Subcellular Location :** Secreted.

---

## Products Images



Immunohistochemical analysis of paraffin-embedded human tonsil. 1, Antibody was diluted at 1:200(4° overnight). 2, Tris-EDTA,pH9.0 was used for antigen retrieval. 3,Secondary antibody was diluted at 1:200(room temperature, 30min).