

## NIT1 rabbit pAb

<b>Catalog No :</b>	YT7119
<b>Reactivity :</b>	Human;Mouse;Rat
<b>Applications :</b>	WB
<b>Target :</b>	NIT1
<b>Gene Name :</b>	NIT1
<b>Protein Name :</b>	NIT1
<b>Human Gene Id :</b>	4817
<b>Human Swiss Prot No :</b>	Q86X76
<b>Mouse Gene Id :</b>	27045
<b>Mouse Swiss Prot No :</b>	Q8VDK1
<b>Rat Swiss Prot No :</b>	Q7TQ94
<b>Immunogen :</b>	Synthesized peptide derived from human NIT1 AA range: 32-82
<b>Specificity :</b>	This antibody detects endogenous levels of NIT1 at Human/Mouse/Rat
<b>Formulation :</b>	Liquid in PBS containing 50% glycerol, 0.5% BSA and 0.02% sodium azide.
<b>Source :</b>	Polyclonal, Rabbit,IgG
<b>Dilution :</b>	WB 1[?]500-2000
<b>Purification :</b>	The antibody was affinity-purified from rabbit antiserum by affinity-chromatography using epitope-specific immunogen.
<b>Concentration :</b>	1 mg/ml

**Storage Stability :** -15°C to -25°C/1 year(Do not lower than -25°C)

**Molecularweight :** 36kD

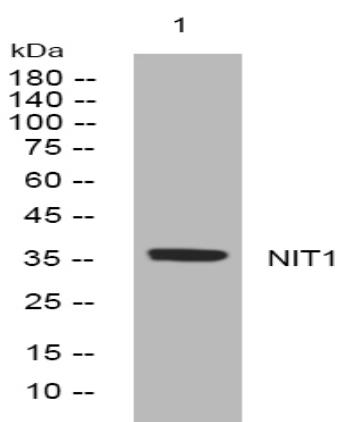
**Background :** This gene encodes a member of the nitrilase protein family with homology to bacterial and plant nitrilases, enzymes that cleave nitriles and organic amides to the corresponding carboxylic acids plus ammonia. Multiple transcript variants encoding different isoforms have been found for this gene. [provided by RefSeq, Jun 2010],

**Function :** sequence caution:Chimeric cDNA. Its C-terminal exon is derived from the last exon of the DEDD gene.,similarity:Belongs to the UPF0012 family.,similarity:Contains 1 CN hydrolase domain.,tissue specificity:Detected in heart, brain, placenta, liver, skeletal muscle, kidney and pancreas.,

**Subcellular Location :** [Isoform 2]: Mitochondrion .; [Isoform 1]: Cytoplasm .

**Expression :** Detected in heart, brain, placenta, liver, skeletal muscle, kidney and pancreas.

## Products Images



Western blot analysis of lysates from PC-12 cells, primary antibody was diluted at 1:1000, 4° over night