

S35D3 rabbit pAb

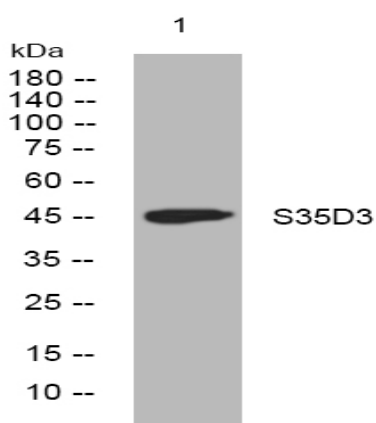
Catalog No :	YT7118
Reactivity :	Human;Mouse
Applications :	WB
Target :	S35D3
Gene Name :	SLC35D3 FRCL1
Protein Name :	S35D3
Human Gene Id :	340146
Human Swiss Prot No :	Q5M8T2
Mouse Gene Id :	76157
Mouse Swiss Prot No :	Q8BGF8
Immunogen :	Synthesized peptide derived from human S35D3 AA range: 11-61
Specificity :	This antibody detects endogenous levels of S35D3 at Human/Mouse
Formulation :	Liquid in PBS containing 50% glycerol, 0.5% BSA and 0.02% sodium azide.
Source :	Polyclonal, Rabbit,IgG
Dilution :	WB 1[?]500-2000
Purification :	The antibody was affinity-purified from rabbit antiserum by affinity-chromatography using epitope-specific immunogen.
Concentration :	1 mg/ml
Storage Stability :	-15°C to -25°C/1 year(Do not lower than -25°C)

Molecularweight : 46kD

Function : function:May play a role in hemostasis as a regulator of the biosynthesis of platelet-dense granules.,similarity:Belongs to the TPT transporter family. SLC35D subfamily.,

Subcellular Location : Membrane ; Multi-pass membrane protein .

Products Images



Western blot analysis of lysates from HpeG2 cells, primary antibody was diluted at 1:1000, 4° over night